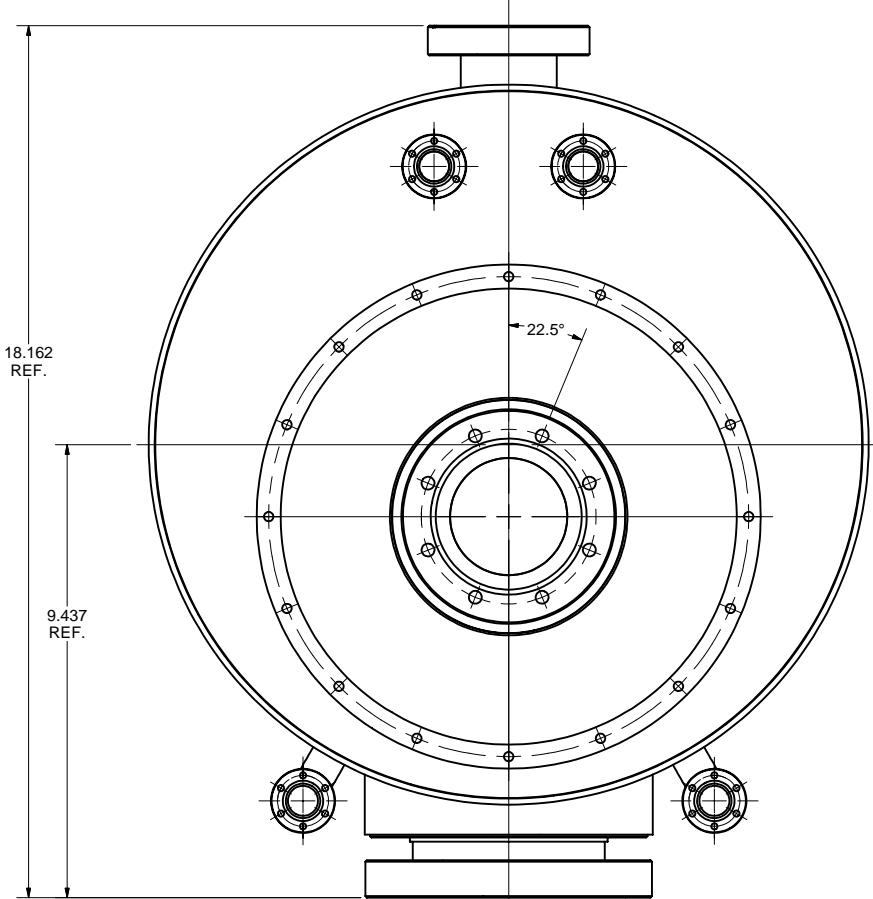
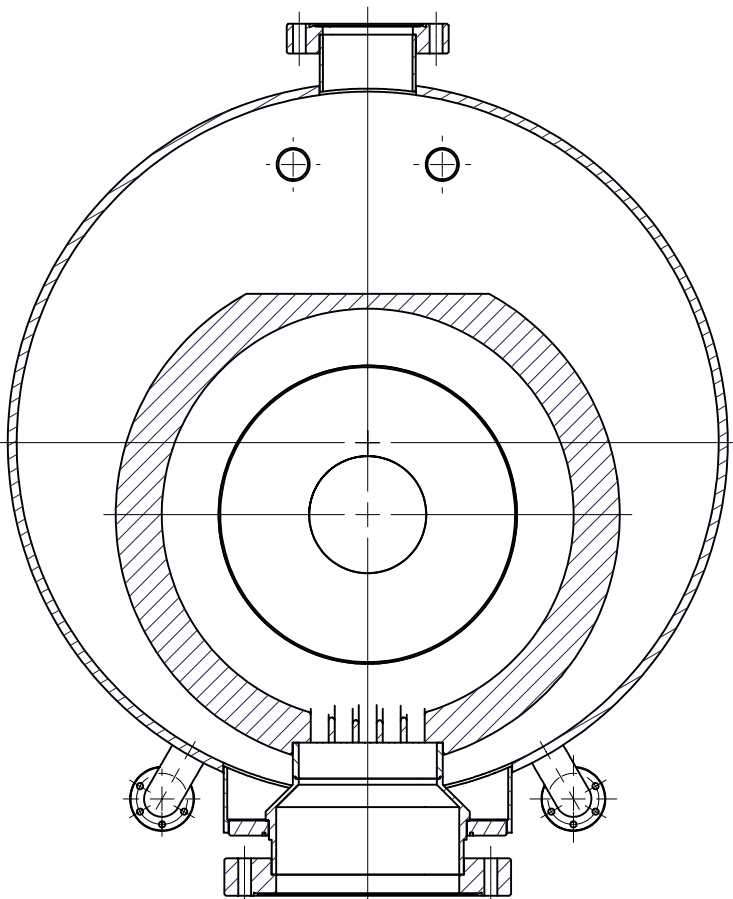
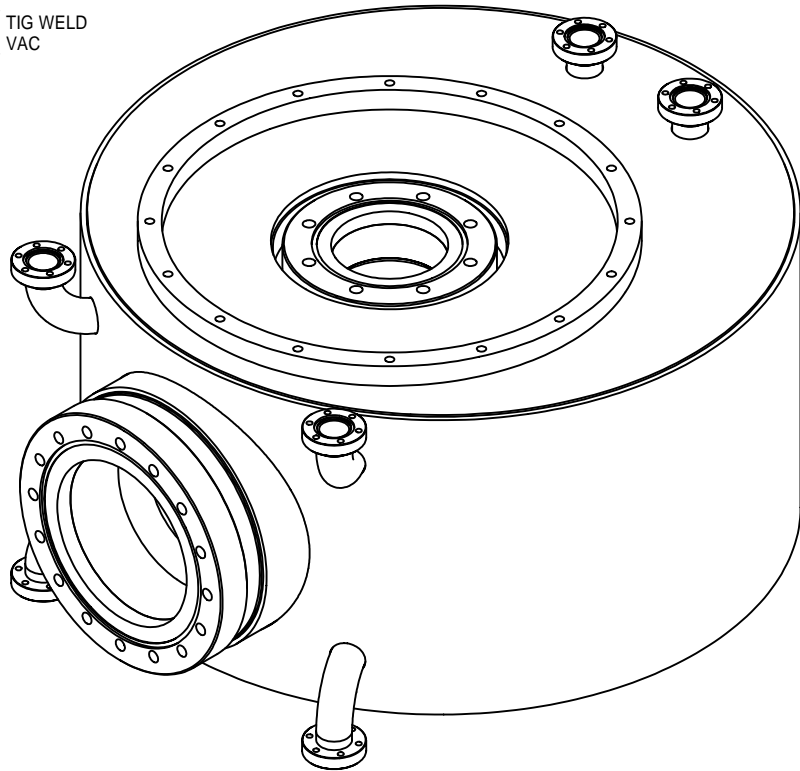
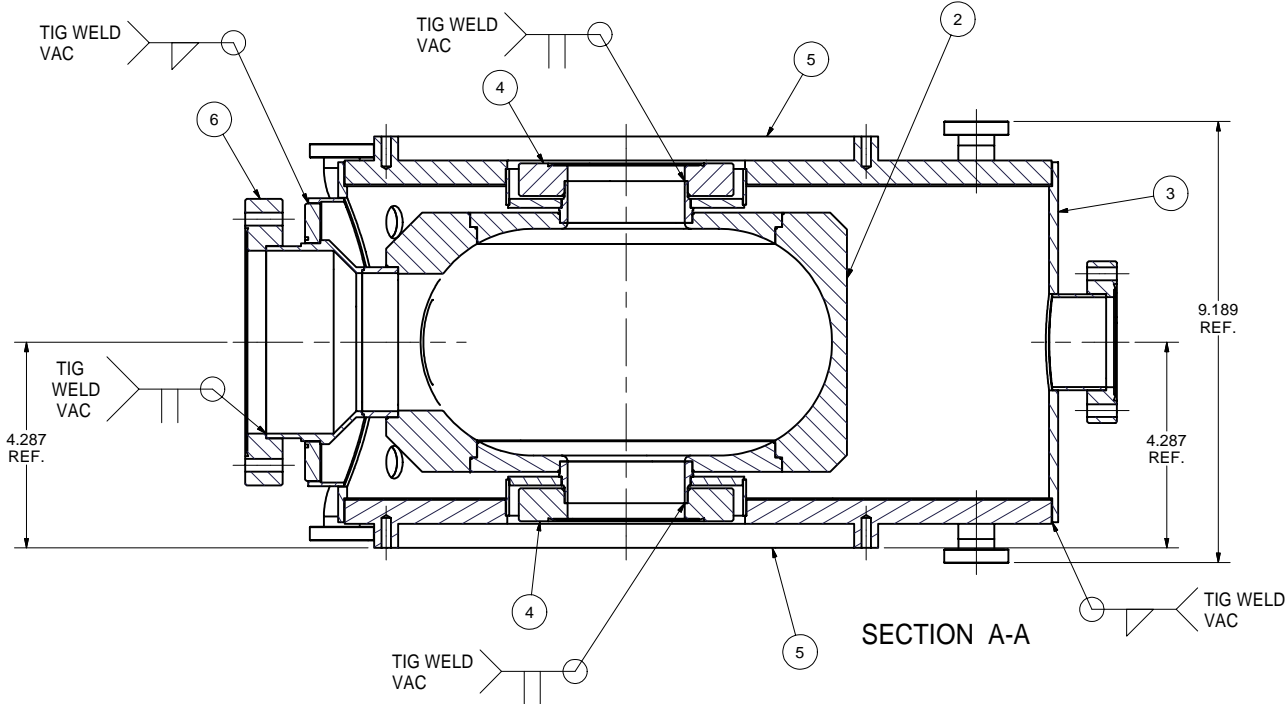
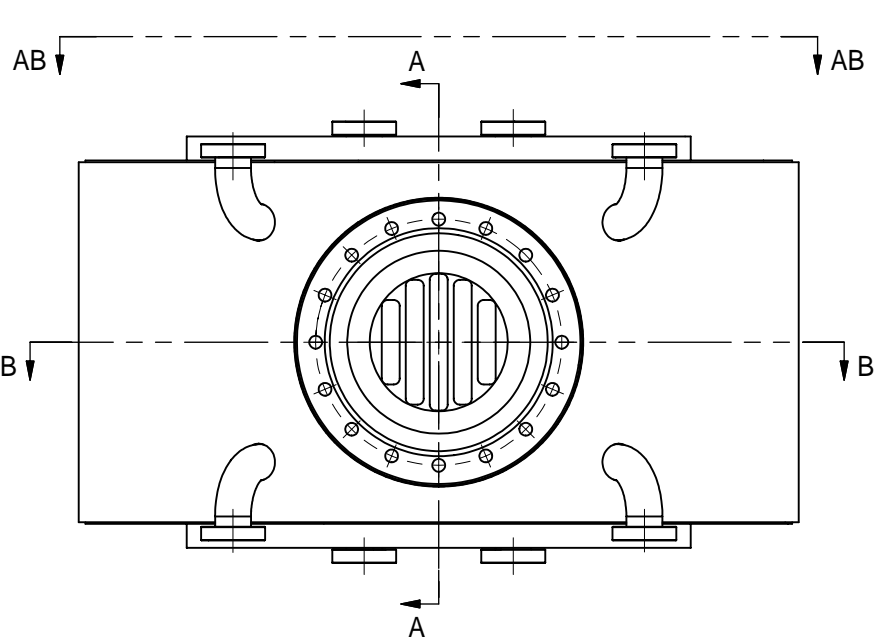


REVISIONS				
SYM.	ZONE	DESCRIPTION	DATE	APP.
A		UPDATED PICTORIALY TO SHOW (4) ELBOW SUB-ASMS & (4) VIEWPORTS JGL	11/16/05	VG



SECTION B-B

VIEW AB-AB

- 1 COUPLING CAVITY W/ NITROGEN VESSEL ASSEMBLY
- FILE NAME: 7102-020  
SHEET NO.: 1  
DFT. SCALE: 1:2  
MATERIAL:  
QTY: 1 REQ'D  
NOTES:

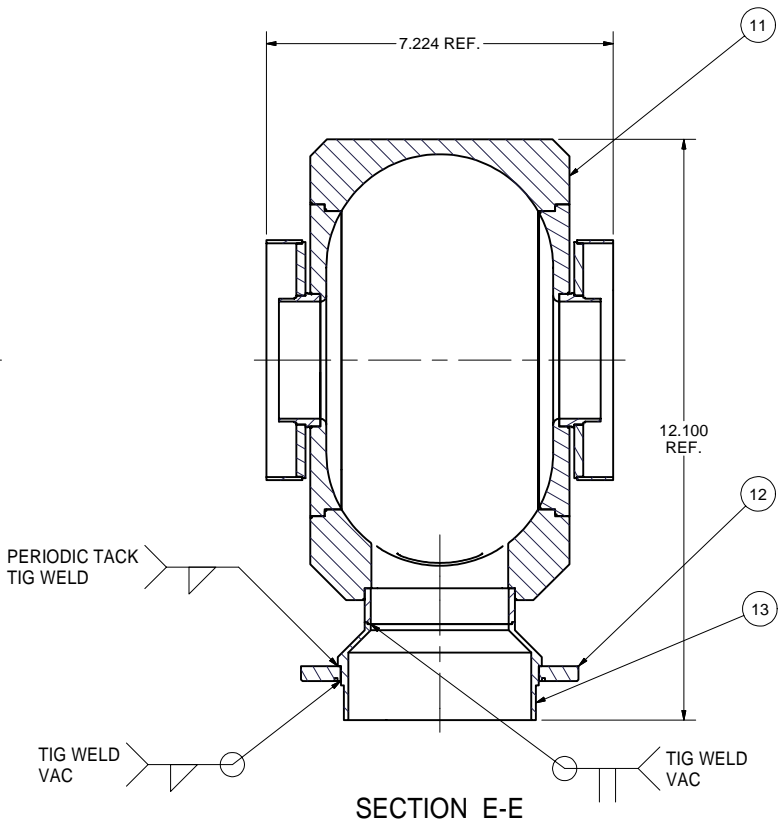
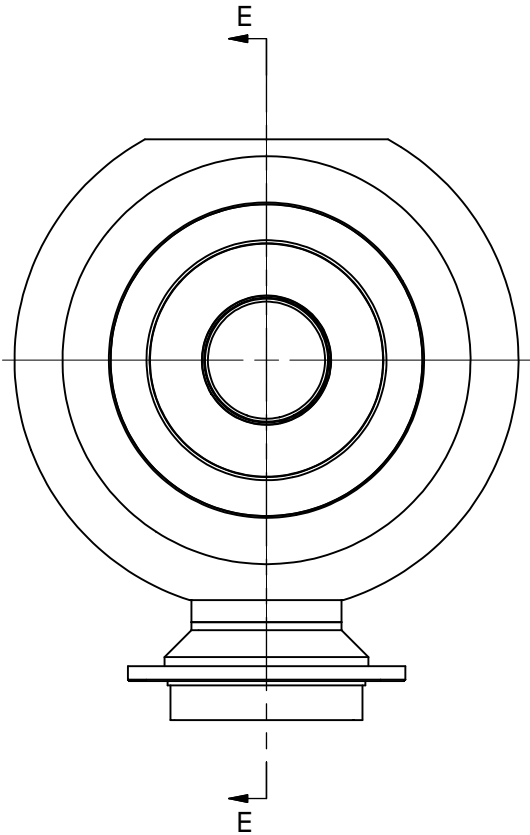
FOR MACHINING LUBRICANT USE ONLY  
ALKALINE DETERGENT LUBRICANT CIMSTAR 40  
OR EQUIVALENT APPROVED BY CORNELL LEPP

TECHNICAL RESOURCE APPROVALS REQUIRED BEFORE FABRICATION			
	OK	DATE	N/A
DRAFTING (O'Connell):			
MACHINE SHOP (Kaminski):			
CHEMISTRY (Conklin):			
ELECTRONICS SHOP (Barley):			
FURNACE BRAZING (Sherwood):			
BEAM WELDING (Sears):			
WELDING OTHER (Gallagher):			
UTILITIES INTEGRATION (Gallagher):			
STOCKROOMS (Lockwood):			

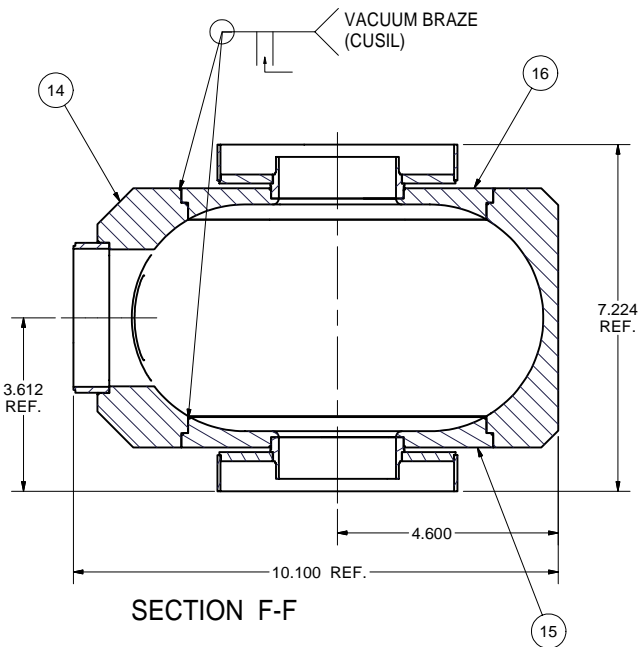
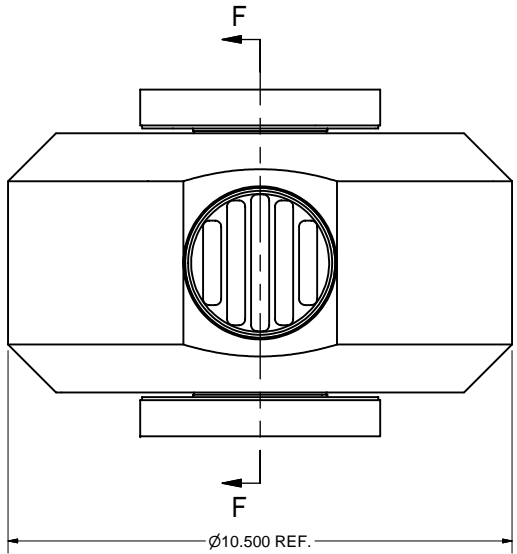
ITEM	DWG. NO.	DESCRIPTION	G1	G2	G3	REMARKS	REV.
6	SHEET 10	6" CONFLAT FLANGE	1			PURCHASED	
5	SHEET 12	SIDE WALL FOR NITROGEN VESSEL W/PORTS SUB-ASM	2				
4	SHEET 10	4-1/2" CONFLAT FLANGE	2			PURCHASED	
3	SHEET 2	NITROGEN VESSEL SUB-ASM	1				
2	SHEET 3	CAVITY W/ PUMP FLANGE SUB-ASM	1				
1	SHEET 1	COUPLING CAVITY W/ N2 VESSEL	X				
PLOT DATE: 11/16/2005 CAD FILE NAME: 7102-020.idw							
UNLESS OTHERWISE SPECIFIED: DIMENSIONS ARE IN INCHES: TOLERANCES ON: .00 ± .010 .000 ± .005 FRACTIONS ± 1/64 ANGLES ± 0.5° ALL SURFACES		<b>CORNELL UNIVERSITY LEPP</b> LABORATORY FOR ELEMENTARY PARTICLE PHYSICS CORNELL UNIVERSITY Floyd R. Newman Laboratory Ithaca, NY 14853					
CHECKED BY: SAB APPROVED BY: SAB		DRAWN BY: VG	DRAWN FOR: SAB	DATE: 4/8/2005	SCALE: 1:2	7102-020 SH. NO. 1 OF 13	REV. A



REVISIONS			
SYM.	ZONE	DESCRIPTION	DATE APP.



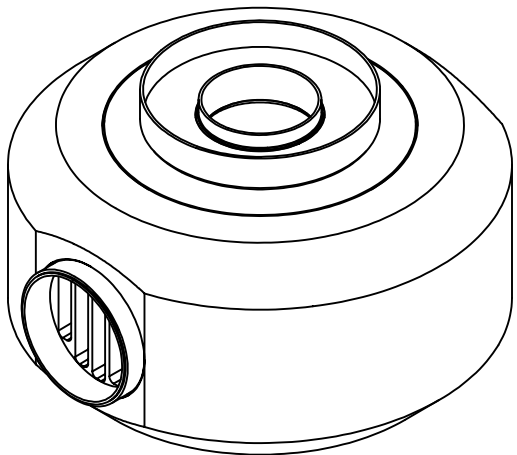
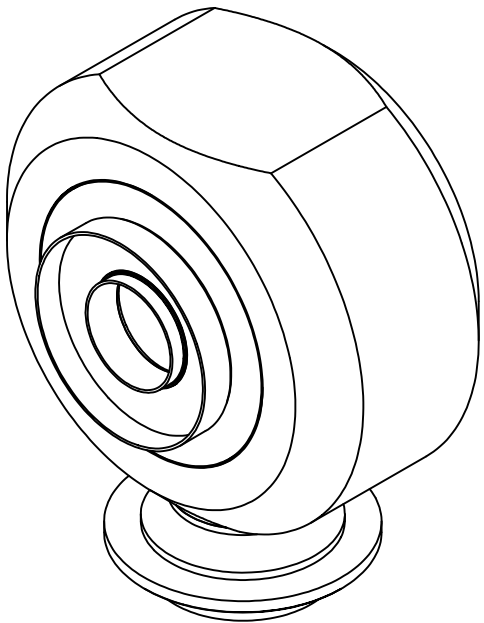
SECTION E-E



SECTION F-F

- 11 CAVITY, SUB-ASM  
FILE NAME: 7102-020  
SHEET NO.: 3  
DFT. SCALE: 1:2  
MATERIAL:  
QTY: 1 PER SUB-ASM.  
NOTES:

- 2 CAVITY W/ PUMP FLANGE, SUB-ASM  
FILE NAME: 7102-020  
SHEET NO.: 3  
DFT. SCALE: 1:2  
MATERIAL:  
QTY: 1 PER ASM.  
NOTES:




16	SHEET 4	RIGHT WALL WITH CUP		1				
15	SHEET 4	LEFT WALL WITH CUP		1				
14	SHEET 5	MAIN BODY WITH PUMP TUBE		1				
13	SHEET 12	PUMP TUBE	1					
12	SHEET 9	PUMP RING	1					
11	SHEET 3	CAVITY, SUB-ASM	1	X				
2	SHEET 3	CAVITY W/ PUMP FLANGE, SUB-ASM	X					

ITEM	DWG. NO.	DESCRIPTION	G1	G2	G3	REMARKS	REV.
			QUANTITY				

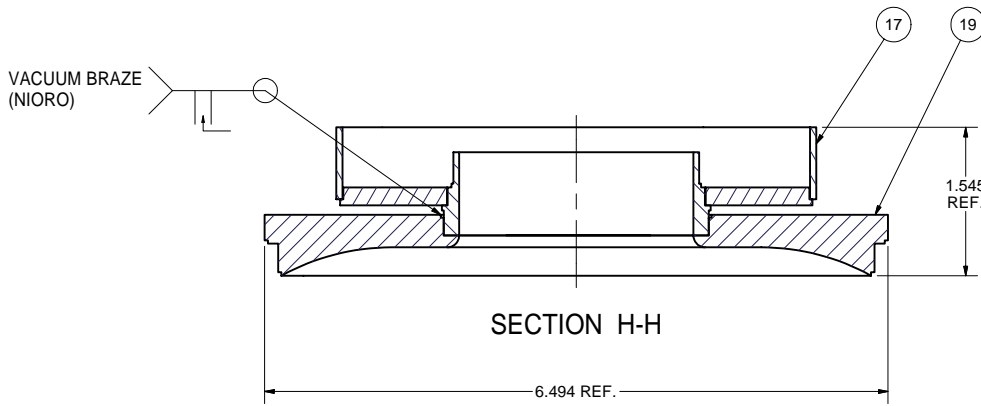
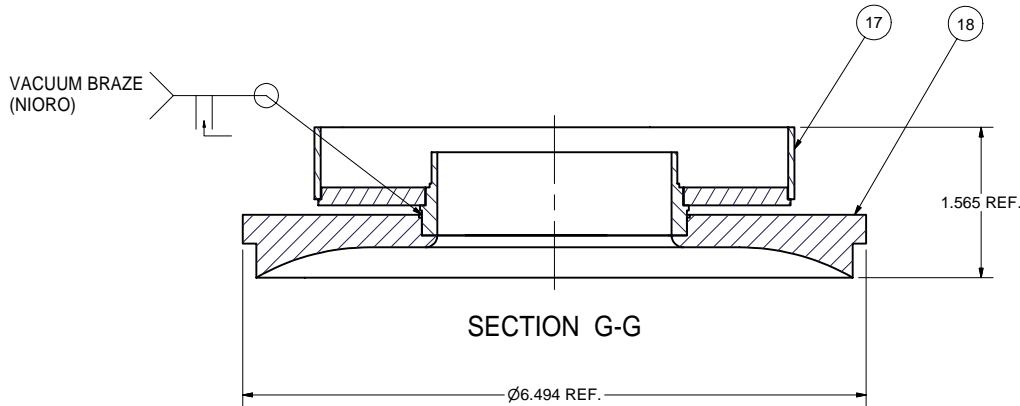
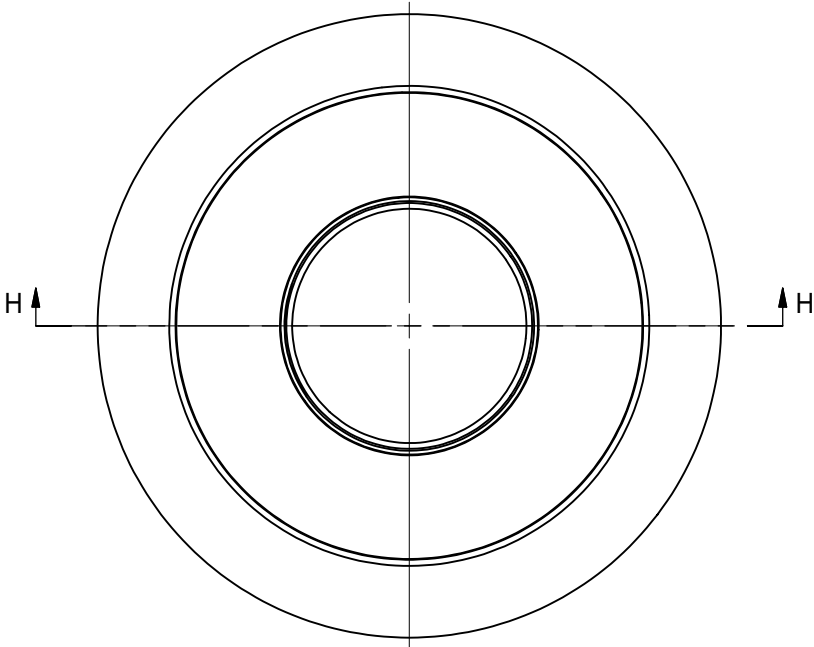
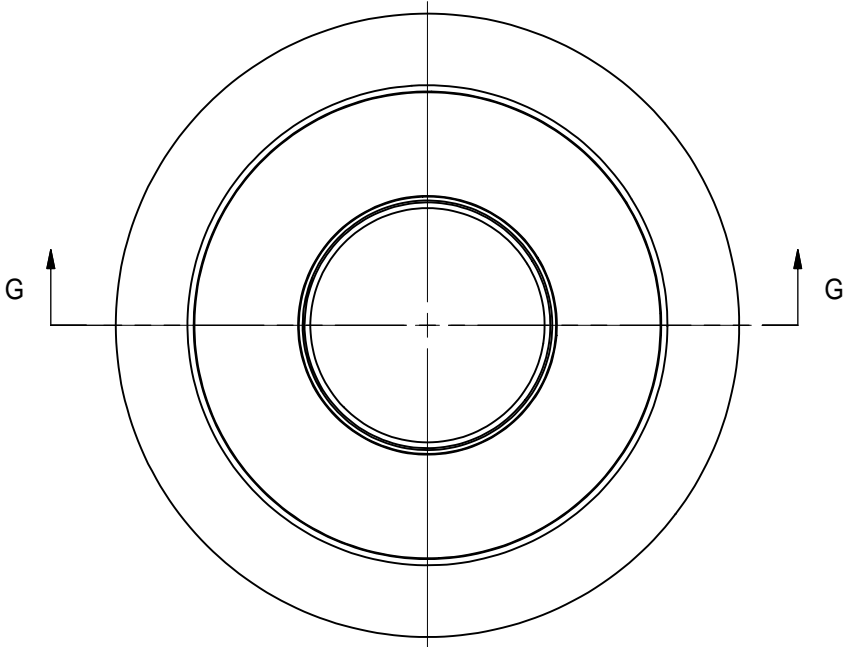
FOR MACHINING LUBRICANT USE ONLY  
ALKALINE DETERGENT LUBRICANT CIMSTAR 40  
OR EQUIVALENT APPROVED BY CORNELL LEPP

TECHNICAL RESOURCE APPROVALS REQUIRED BEFORE FABRICATION			
	OK	DATE	N/A
DRAFTING (O'Connell):			
MACHINE SHOP (Kaminski):			
CHEMISTRY (Conklin):			
ELECTRONICS SHOP (Barley):			
FURNACE BRAZING (Sherwood):			
BEAM WELDING (Sears):			
WELDING OTHER (Gallagher):			
UTILITIES INTEGRATION (Gallagher):			
STOCKROOMS (Lockwood):			

PRINT DISTR.	CR-1
7102-020 SH. NO. 3 OF 13	REV.

PLOT DATE: 11/16/2005 CAD FILE NAME: 7102-020.idw						
UNLESS OTHERWISE SPECIFIED:  DIMENSIONS ARE IN INCHES: TOLERANCES ON: .00 ± .010 .000 ± .005 FRACTIONS ± 1/64 ANGLES ± 0.5° ALL SURFACES ✓		 CORNELL UNIVERSITY LABORATORY FOR ELEMENTARY PARTICLE PHYSICS		CORNELL UNIVERSITY Floyd R. Newman Laboratory Ithaca, NY 14853		
CHECKED BY: SAB  APPROVED BY: SAB		INPUT COUPLER TEST CRYOSTAT COUPLING CAVITY W/ N2 VESSEL ,CAVITY SUB-ASM				
		DRAWN BY: VGV	DRAWN FOR: SAB	DATE: 4/8/2005	SCALE: 1:2	D
					7102-020 SH. NO. 3 OF 13	REV.

REVISIONS			
SYM.	ZONE	DESCRIPTION	DATE APP.




16 RIGHT WALL W/ CUP, SUB-ASM  
FILE NAME: 7102-020  
SHEET NO.: 4  
DFT. SCALE: 1:1  
MATERIAL:  
QTY: 1 PER SUB-ASM.  
NOTES:

15 LEFT WALL W/ CUP, SUB-ASM  
FILE NAME: 7102-020  
SHEET NO.: 4  
DFT. SCALE: 1:1  
MATERIAL:  
QTY: 1 PER SUB-ASM.  
NOTES:

FOR MACHINING LUBRICANT USE ONLY  
ALKALINE DETERGENT LUBRICANT CIMSTAR 40  
OR EQUIVALENT APPROVED BY CORNELL LEPP

TECHNICAL RESOURCE APPROVALS REQUIRED BEFORE FABRICATION			
	OK	DATE	N/A
DRAFTING (O'Connell):			
MACHINE SHOP (Kaminski):			
CHEMISTRY (Conklin):			
ELECTRONICS SHOP (Barley):			
FURNACE BRAZING (Sherwood):			
BEAM WELDING (Sears):			
WELDING OTHER (Gallagher):			
UTILITIES INTEGRATION (Gallagher):			
STOCKROOMS (Lockwood):			

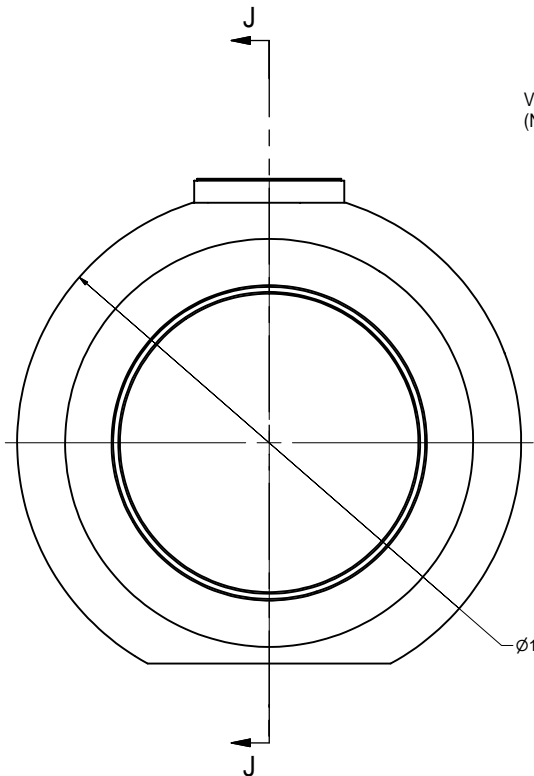
PRINT DISTR.	CR-1
7102-020	REV.
SH. NO. 4	OF 13

19	SHEET 7	CAVITY LEFT WALL		1					
17	SHEET 6	CAVITY CENTRAL CUP		1					
15	SHEET 4	LEFT WALL WITH CUP, SUB-ASM		X					
18	SHEET 7	CAVITY RIGHT WALL		1					
17	SHEET 6	CAVITY CENTRAL CUP		1					
16	SHEET 4	RIGHT WALL WITH CUP, SUB-ASM		X					
ITEM	DWG. NO.	DESCRIPTION	G1	G2	G3	REMARKS	REV.		
			QUANTITY						
PLOT DATE: 11/16/2005									
CAD FILE NAME: 7102-020.idw									
UNLESS OTHERWISE SPECIFIED:  DIMENSIONS ARE IN INCHES: TOLERANCES ON: .00 ± .010 .000 ± .005 FRACTIONS ± 1/64 ANGLES ± 0.5° ALL SURFACES ✓		<div>CORNELL UNIVERSITY  LEPP</div> <div>LABORATORY FOR ELEMENTARY PARTICLE PHYSICS</div> <div>CORNELL UNIVERSITY Floyd R. Newman Laboratory Ithaca, NY 14853</div>							
		INPUT COUPLER TEST CRYOSTAT COUPLING CAVITY W/ N2 VESSEL ,SUB-ASM DETAILS							
CHECKED BY: SAB	DRAWN BY VGV		DRAWN FOR SAB		DATE 4/8/2005	SCALE 1:1	D	7102-020	REV.
APPROVED BY: SAB								SH. NO. 4 OF 13	

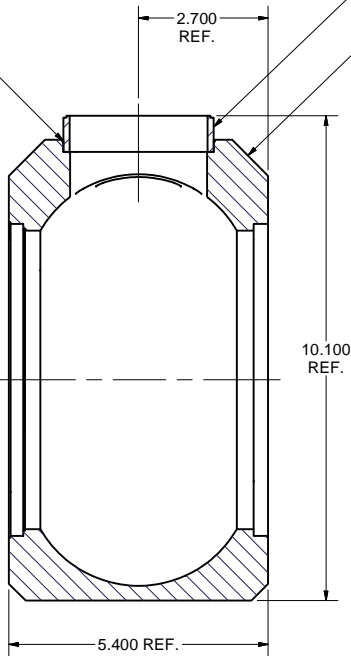


INPUT COUPLER TEST CRYOSTAT  
COUPLING CAVITY W/ N2 VESSEL ,SUB-ASM DETAILS

REVISIONS				
SYM.	ZONE	DESCRIPTION	DATE	APP.
A	B-2	MAT'L CHANGE TO PT 20, WAS OHFC NOW OFEC101	9/28/05	TIO

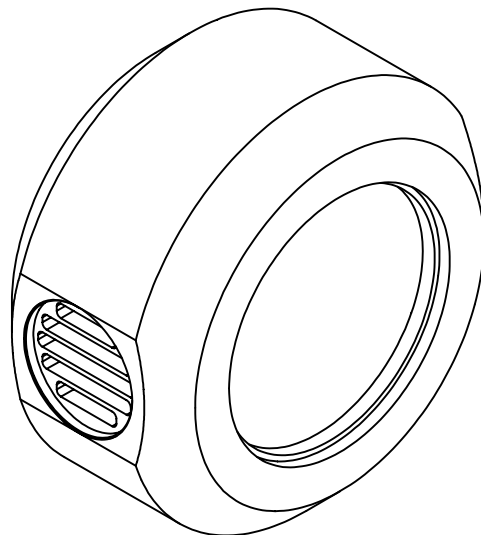
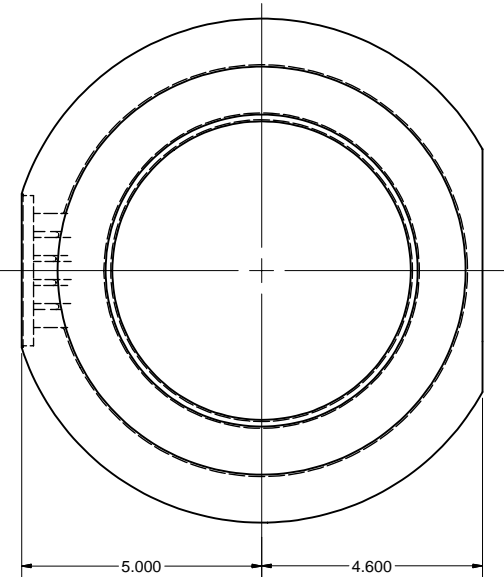
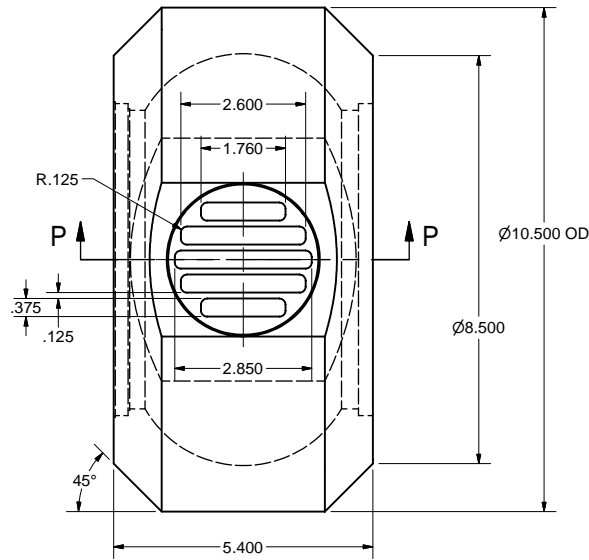
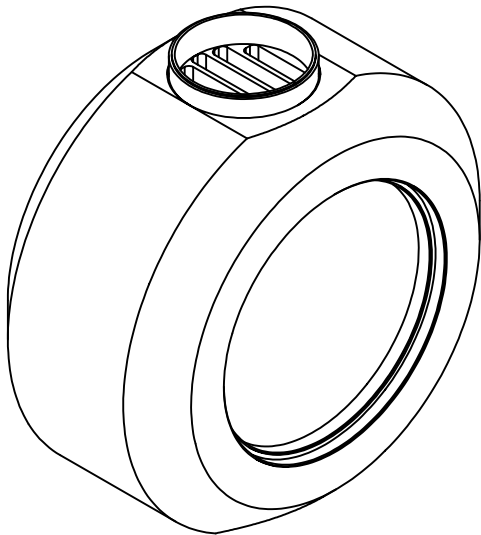


VACUUM BRAZE  
(NIORO)

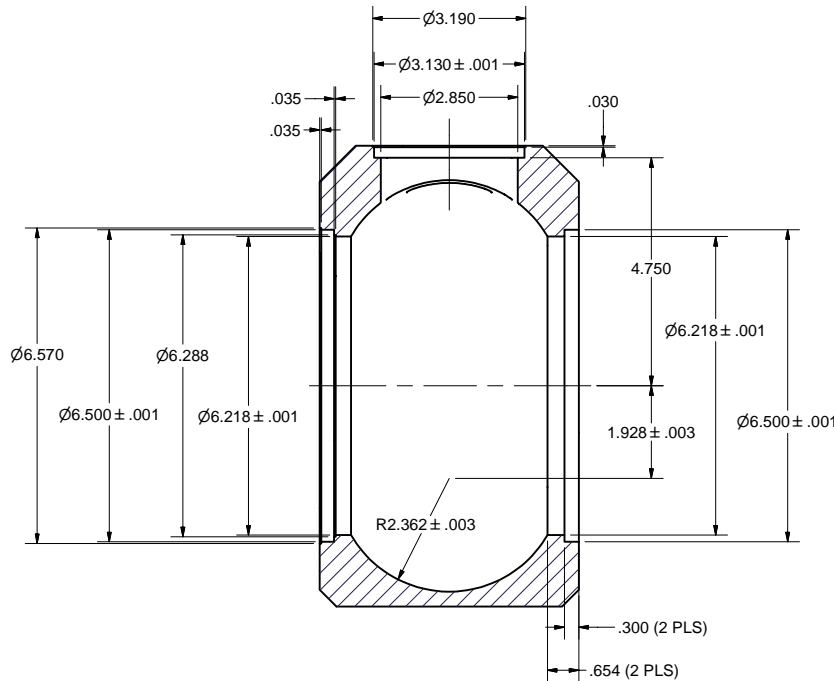


SECTION J-J

- 14 MAIN BODY W/ PUMP TUBE, SUB-ASM
- FILE NAME: 7102-020  
SHEET NO.: 5  
DFT. SCALE: 1:1  
MATERIAL:  
QTY: 1 PER SUB-ASM.  
NOTES:



- 20 CAVITY MAIN BODY
- FILE NAME: 7102-020  
SHEET NO.: 5  
DFT. SCALE: 1:1  
MATERIAL: OFEC101 COPPER  
QTY: 1 PER SUB-ASM.  
NOTES:



SECTION P-P

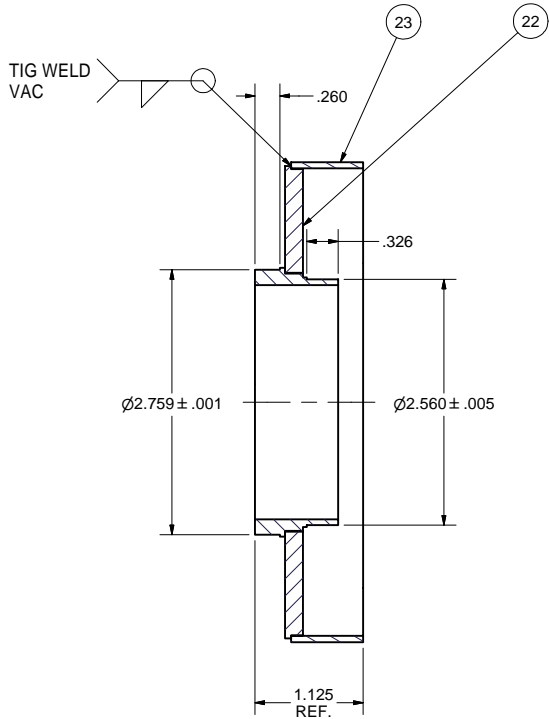
FOR MACHINING LUBRICANT USE ONLY  
ALKALINE DETERGENT LUBRICANT CIMSTAR 40  
OR EQUIVALENT APPROVED BY CORNELL LEPP

TECHNICAL RESOURCE APPROVALS REQUIRED BEFORE FABRICATION			
	OK	DATE	N/A
DRAFTING (O'Connell):			
MACHINE SHOP (Kaminski):			
CHEMISTRY (Conklin):			
ELECTRONICS SHOP (Barley):			
FURNACE BRAZING (Sherwood):			
BEAM WELDING (Sears):			
WELDING OTHER (Gallagher):			
UTILITIES INTEGRATION (Gallagher):			
STOCKROOMS (Lockwood):			

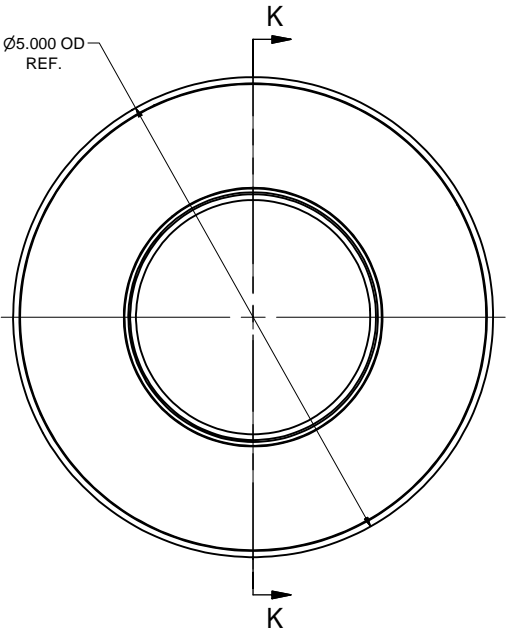
ITEM	DWG. NO.	DESCRIPTION	QUANTITY	REMARKS	REV.
21	SHEET 8	CAVITY PUMP TUBE	1		
20	SHEET 5	CAVITY MAIN BODY	1		
14	SHEET 5	MAIN BODY W/ PUMP TUBE, S/A	X		
PLOT DATE: 11/16/2005 CAD FILE NAME: 7102-020.idw					
UNLESS OTHERWISE SPECIFIED: DIMENSIONS ARE IN INCHES: TOLERANCES ON: .00 ± .010 .000 ± .005 FRACTIONS ± 1/64 ANGLES ± 0.5° ALL SURFACES					
CORNELL UNIVERSITY FLOYD R. NEWMAN LABORATORY ITHACA, NY 14853					
INPUT COUPLER TEST CRYOSTAT COUPLING CAVITY W/ N2 VESSEL ,PART DETAIL / SUB-ASM					
CHECKED BY: SAB	DRAWN BY: VGV	DRAWN FOR: SAB	DATE: 4/8/2005	SCALE: D	7102-020 SH. NO. 5 OF 13
APPROVED BY: SAB					REV. A



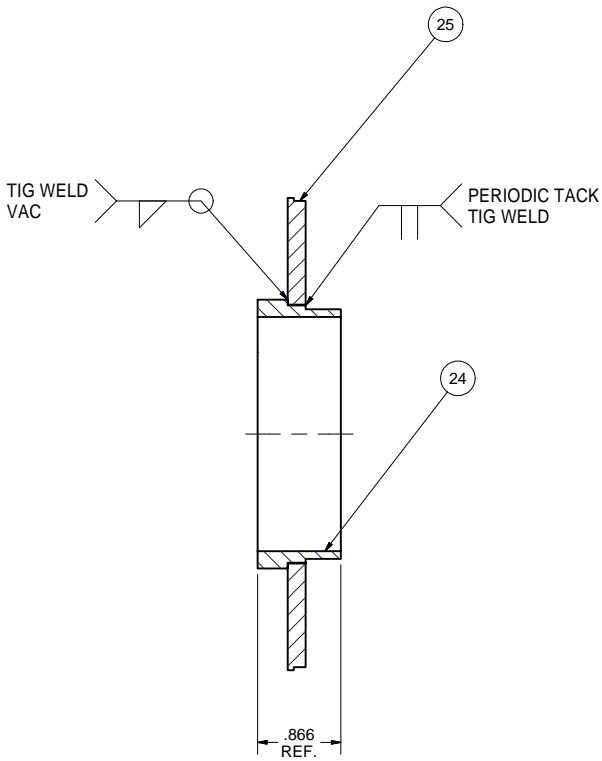
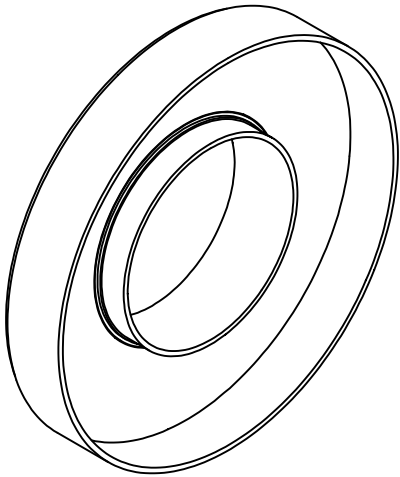
REVISIONS			
SYM.	ZONE	DESCRIPTION	DATE APP.



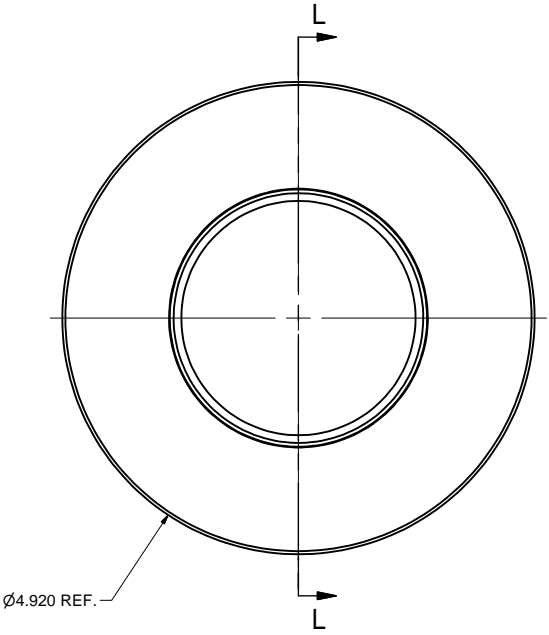
SECTION K-K



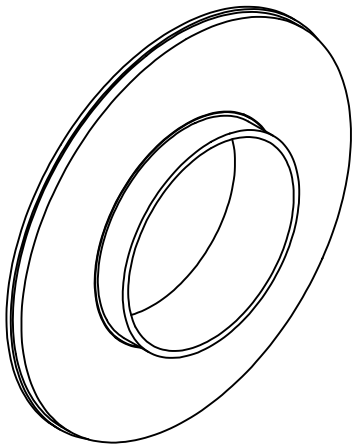
17 CAVITY CENTRAL CUP, SUB-ASM  
FILE NAME: 7102-020  
SHEET NO.: 6  
DFT. SCALE: 1:1  
MATERIAL: 304 STN. STL  
QTY: 2 PER SUB-ASM.  
NOTES:



SECTION L-L





22 CENTRAL TUBE W/ DISK, SUB-ASM  
FILE NAME: 7102-020  
SHEET NO.: 6  
DFT. SCALE: 1:1  
MATERIAL: 304 STN. STL  
QTY: 2 PER SUB-ASM.  
NOTES:



FOR MACHINING LUBRICANT USE ONLY  
ALKALINE DETERGENT LUBRICANT CIMSTAR 40  
OR EQUIVALENT APPROVED BY CORNELL LEPP

TECHNICAL RESOURCE APPROVALS REQUIRED BEFORE FABRICATION			
	OK	DATE	N/A
DRAFTING (O'Connell):			
MACHINE SHOP (Kaminski):			
CHEMISTRY (Conklin):			
ELECTRONICS SHOP (Barley):			
FURNACE BRAZING (Sherwood):			
BEAM WELDING (Sears):			
WELDING OTHER (Gallagher):			
UTILITIES INTEGRATION (Gallagher):			
STOCKROOMS (Lockwood):			

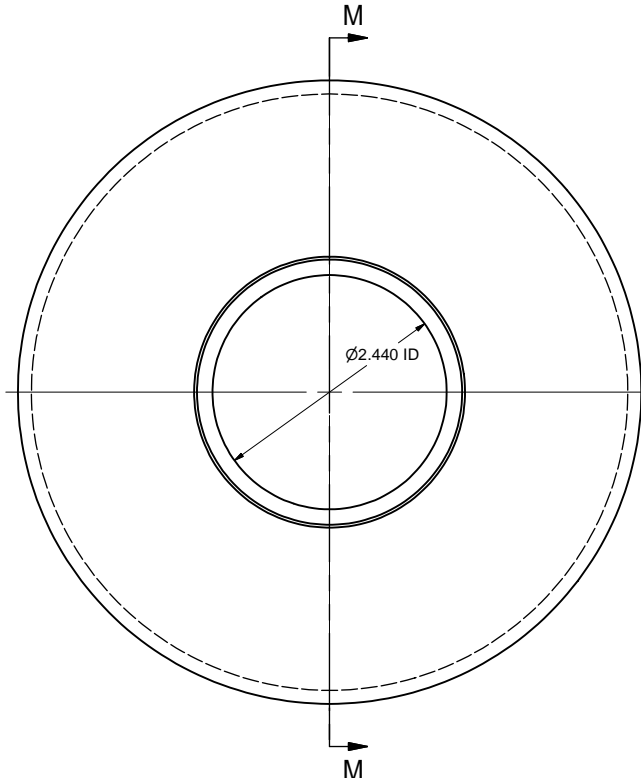
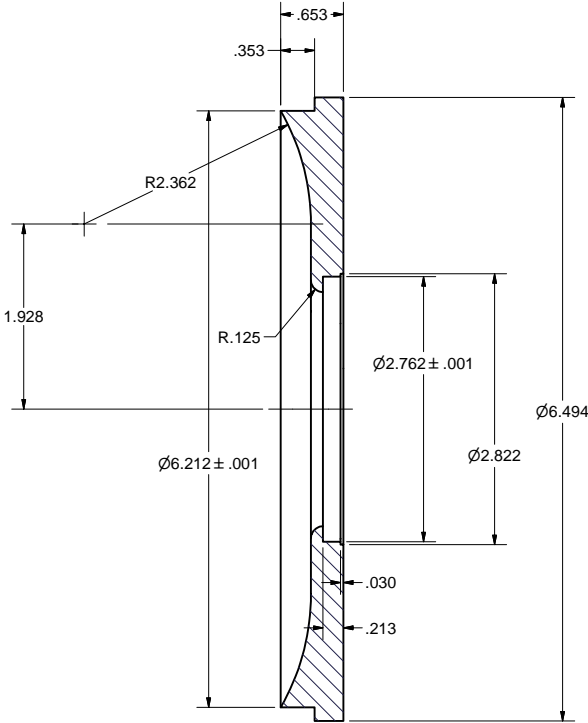
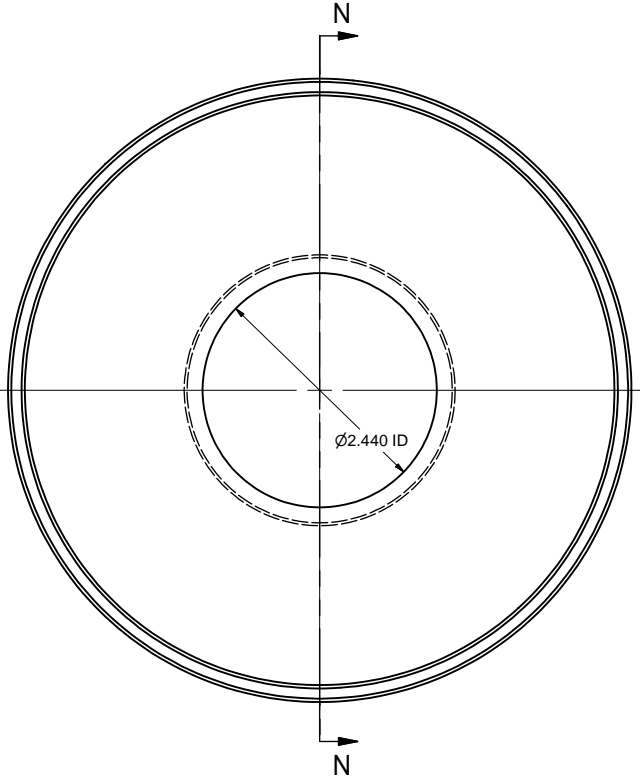
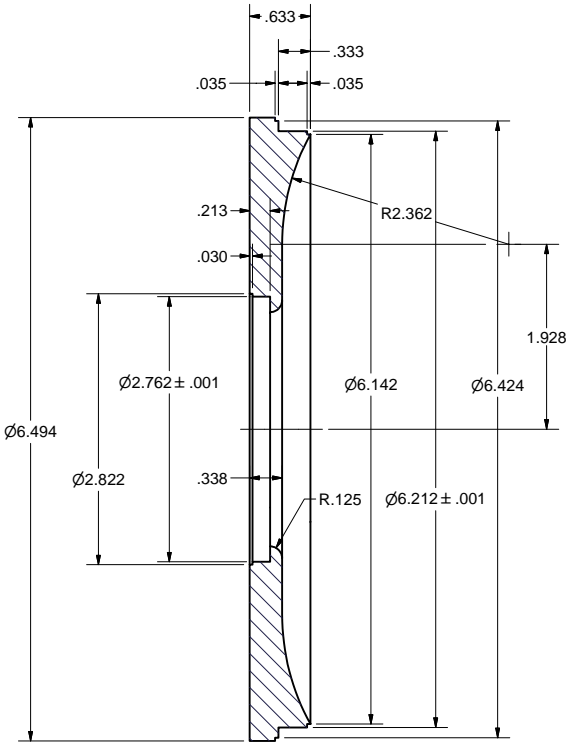
PRINT DISTR.	CR-1
7102-020	REV.
SH. NO. 6	OF 13

25	SHEET 9	CAVITY CENTRAL DISK		1			
24	SHEET 8	CAVITY CENTRAL TUBE		1			
23	SHEET 9	CENTRAL TUBE 1		1			
22	SHEET 6	CENTRAL TUBE W/ DISK, SUB-ASM		1	X		
17	SHEET 6	CAVITY CENTRAL CUP, SUB-ASM		X			
ITEM	DWG. NO.	DESCRIPTION	G1	G2	G3	REMARKS	REV.
			QUANTITY				
PLOT DATE: 11/16/2005 CAD FILE NAME: 7102-020.idw							
UNLESS OTHERWISE SPECIFIED:  DIMENSIONS ARE IN INCHES: TOLERANCES ON: .00 ± .010 .000 ± .005 FRACTIONS ± 1/64 ANGLES ± 0.5 ALL SURFACES 		 CORNELL UNIVERSITY FLOYD R. NEWMAN LABORATORY ITHACA, NY 14853		INPUT COUPLER TEST CRYOSTAT COUPLING CAVITY W/ N2 VESSEL .SUB-ASM DETAILS			
CHECKED BY: SAB	DRAWN BY: VGV	DRAWN FOR: SAB	DATE: 4/8/2005	SCALE: 1:1	D	7102-020	REV.
APPROVED BY: SAB						SH. NO. 6 OF 13	



INPUT COUPLER TEST CRYOSTAT  
COUPLING CAVITY W/ N2 VESSEL ,SUB-ASM DETAILS

REVISIONS				
SYM.	ZONE	DESCRIPTION	DATE	APP.
A	C2, C5	MATL CHANGES PTS 18, 19, WAS OHFC NOW OFEC101	JRK 9/28/05	TIO

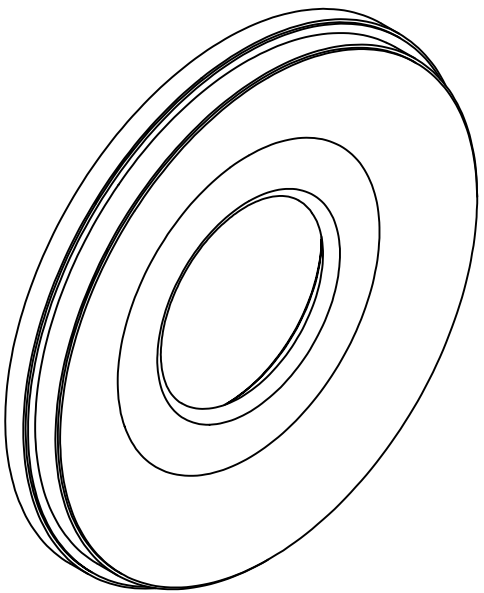
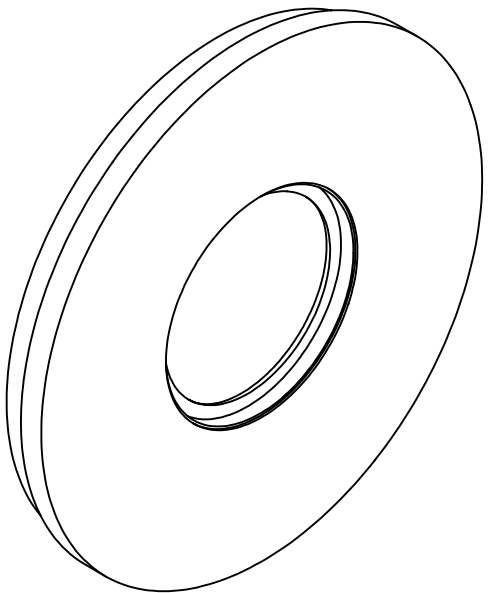


18 CAVITY LEFT WALL


FILE NAME: 7102-020  
SHEET NO.: 7  
DFT. SCALE: 1:1  
MATERIAL: OFEC101 COPPER  
QTY: 1 PER SUB-ASM.  
NOTES:

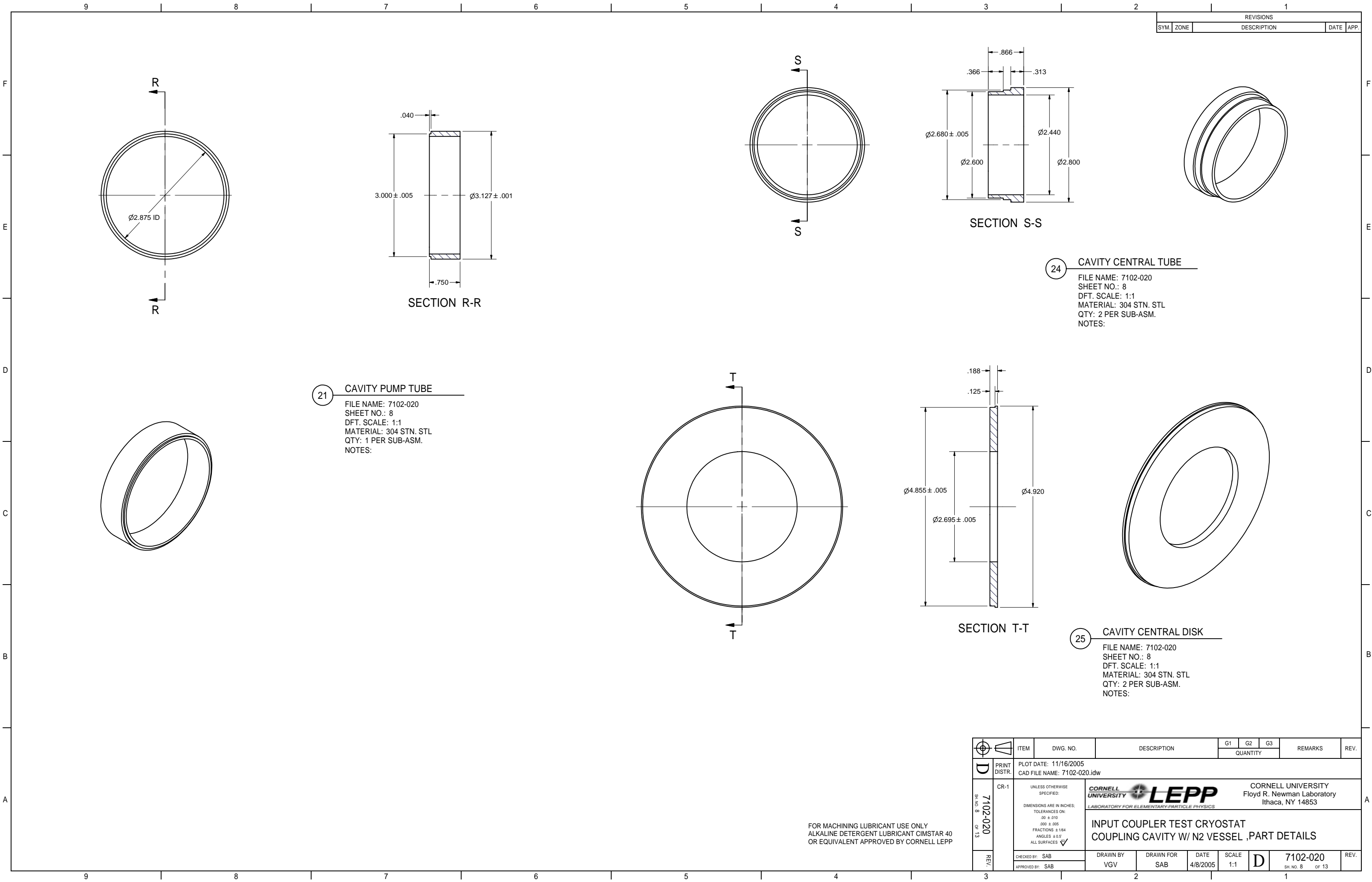
19 CAVITY RIGHT WALL

FILE NAME: 7102-020  
SHEET NO.: 7  
DFT. SCALE: 1:1  
MATERIAL: OFEC101 COPPER  
QTY: 1 PER SUB-ASM.  
NOTES:

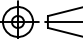

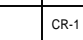





FOR MACHINING LUBRICANT USE ONLY  
ALKALINE DETERGENT LUBRICANT CIMSTAR 40  
OR EQUIVALENT APPROVED BY CORNELL LEPP

		ITEM	DWG. NO.		DESCRIPTION			G1	G2	G3	REMARKS		REV.	
								QUANTITY						
D	PRINT DISTR.	PLOT DATE: 11/16/2005 CAD FILE NAME: 7102-020.idw												
7102-020 SH. NO. 7 OF 13	CR-1	UNLESS OTHERWISE SPECIFIED:		<div><div><div>CORNELL UNIVERSITY FLOYD R. NEWMAN LABORATORY Ithaca, NY 14853</div></div><div>LABORATORY FOR ELEMENTARY-PARTICLE PHYSICS</div></div>										
		DIMENSIONS ARE IN INCHES:												
		TOLERANCES ON: .00 ± .010 .000 ± .005 FRACTIONS ± 1/64 ANGLES ± 0.5° ALL SURFACES ✓		INPUT COUPLER TEST CRYOSTAT COUPLING CAVITY W/ N2 VESSEL ,CAVITY WALL DETAILS										
A	REV.	CHECKED BY: SAB		DRAWN BY		DRAWN FOR		DATE		SCALE		D	7102-020 SH. NO. 7 OF 13	REV. A
		APPROVED BY: SAB		VGV		SAB		4/8/2005		1:1				

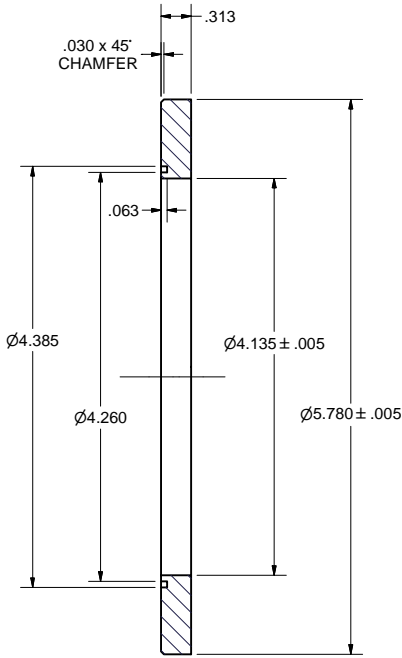
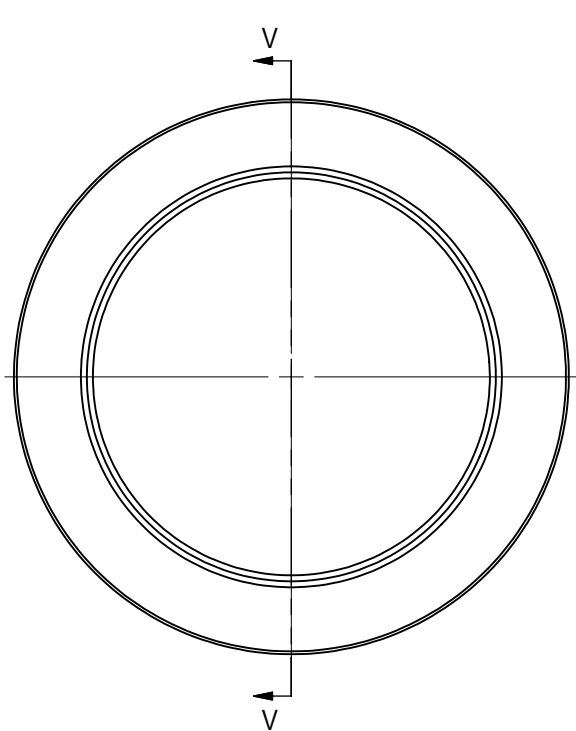


FOR MACHINING LUBRICANT USE ONLY  
ALKALINE DETERGENT LUBRICANT CIMSTAR 40  
OR EQUIVALENT APPROVED BY CORNELL LEPP

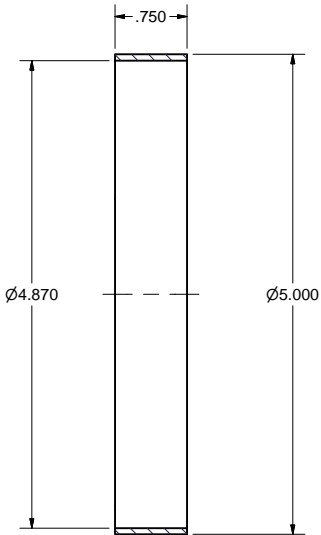
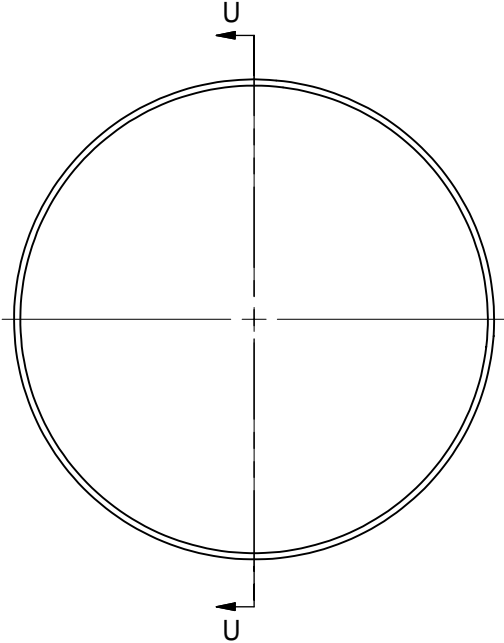
	ITEM	DWG. NO.	DESCRIPTION			G1	G2	G3	REMARKS	REV.
							QUANTITY			
	PRINT DISTR.	PLOT DATE: 11/16/2005 CAD FILE NAME: 7102-020.idw								
 SH. NO. 8 OF 13	7102-020	CR-1	UNLESS OTHERWISE SPECIFIED:  DIMENSIONS ARE IN INCHES: TOLERANCES ON: .00 ± .010 .000 ± .005 FRACTIONS ± 1/64 ANGLES ± 0.5° ALL SURFACES 	CORNELL UNIVERSITY Floyd R. Newman Laboratory Ithaca, NY 14853						
				INPUT COUPLER TEST CRYOSTAT COUPLING CAVITY W/ N2 VESSEL ,PART DETAILS						
	REV.	CHECKED BY: SAB	DRAWN BY	DRAWN FOR	DATE	SCALE		7102-020	SH. NO. 8 OF 13	REV.
		APPROVED BY: SAB	VGW	SAB	4/8/2005	1:1				



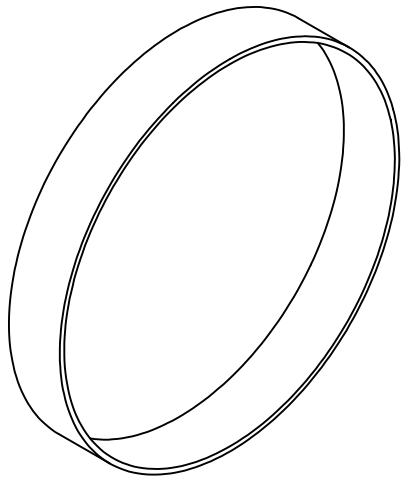
REVISIONS			
SYM.	ZONE	DESCRIPTION	DATE APP.



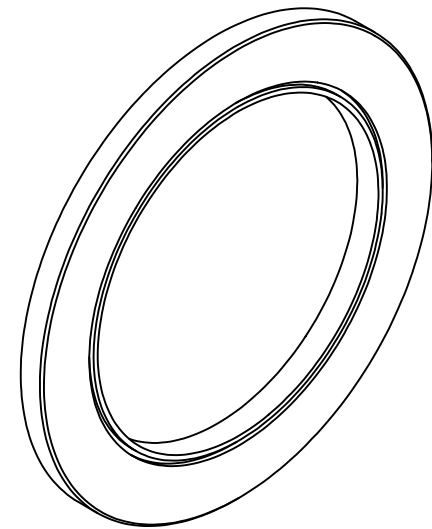
SECTION V-V



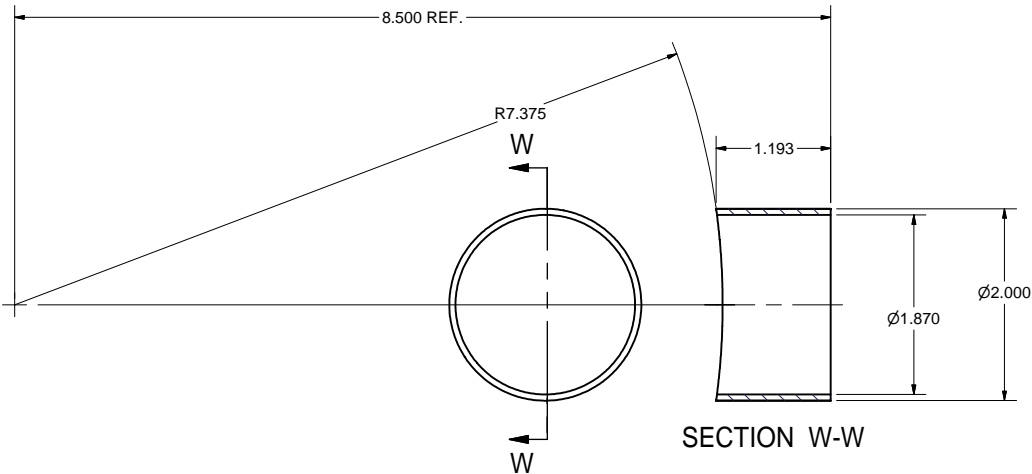
SECTION U-U



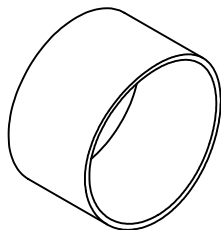
**23 CENTRAL TUBE 1**  
FILE NAME: 7102-020  
SHEET NO.: 9  
DFT. SCALE: 1:1  
MATERIAL: 304 STN. STL (5"x.065" TUBING)  
QTY: 2 PER SUB-ASM.  
NOTES:



**12 PUMP RING**  
FILE NAME: 7102-020  
SHEET NO.: 9  
DFT. SCALE: 1:1  
MATERIAL: 304 STN. STL  
QTY: 1 PER SUB-ASM.  
NOTES:

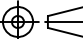


SECTION W-W

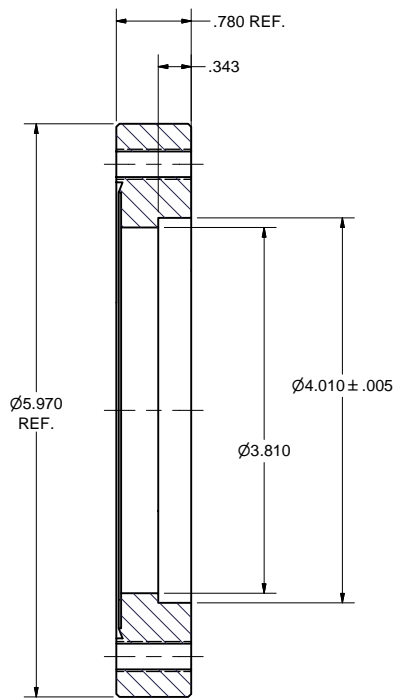
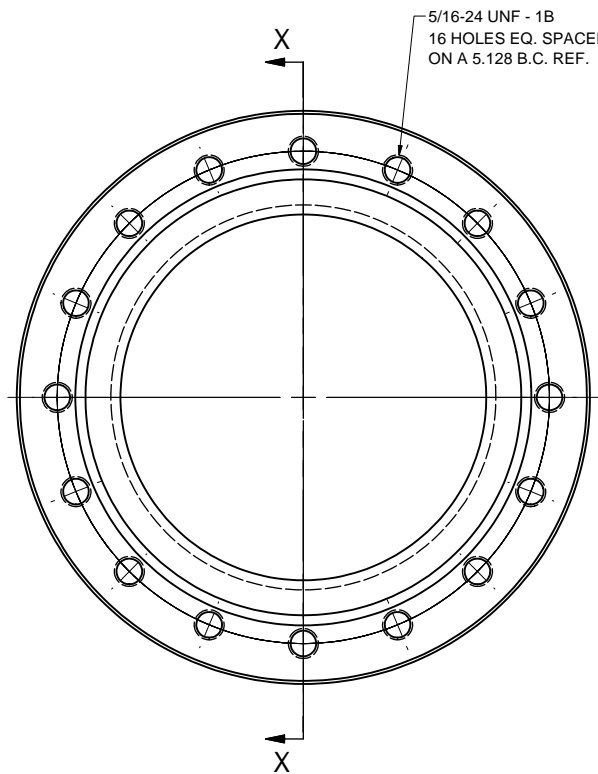


**9 TOP TUBE FOR NITROGEN VESSEL**  
FILE NAME: 7102-020  
SHEET NO.: 9  
DFT. SCALE: 1:1  
MATERIAL: 304 STN. STL (2"x.065" TUBING)  
QTY: 1 PER SUB-ASM.  
NOTES:

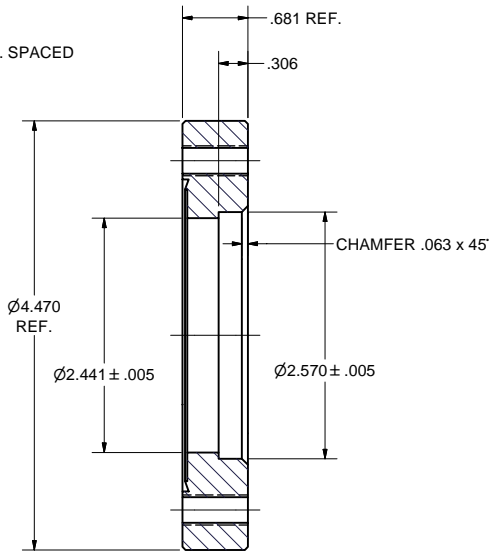
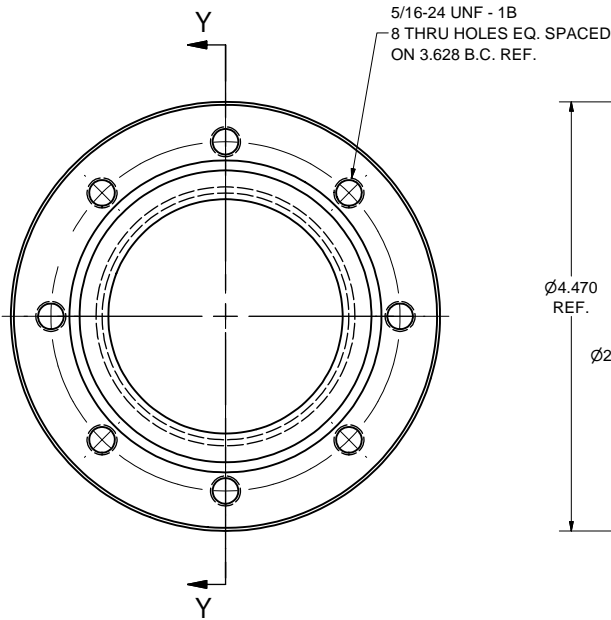
FOR MACHINING LUBRICANT USE ONLY  
ALKALINE DETERGENT LUBRICANT CIMSTAR 40  
OR EQUIVALENT APPROVED BY CORNELL LEPP

	ITEM	DWG. NO.	DESCRIPTION			G1	G2	G3	REMARKS	REV.
	QUANTITY									
<b>D</b>	PRINT DISTR.	PLOT DATE: 11/16/2005 CAD FILE NAME: 7102-020.idw								
7102-020 SH. NO. 9 OF 13	CR-1	UNLESS OTHERWISE SPECIFIED:  DIMENSIONS ARE IN INCHES: TOLERANCES ON: .00 ± .010 .000 ± .005 FRACTIONS ± 1/64 ANGLES ± 0.5° ALL SURFACES ✓	<div>CORNELL UNIVERSITY Floyd R. Newman Laboratory Ithaca, NY 14853</div> <div>INPUT COUPLER TEST CRYOSTAT COUPLING CAVITY W/ N2 VESSEL , PART DETAILS</div>							
		CHECKED BY: SAB	DRAWN BY VGV	DRAWN FOR SAB	DATE 4/8/2005	SCALE 1:1	<b>D</b>	7102-020	SH. NO. 9 OF 13	
		APPROVED BY: SAB								
REV.										

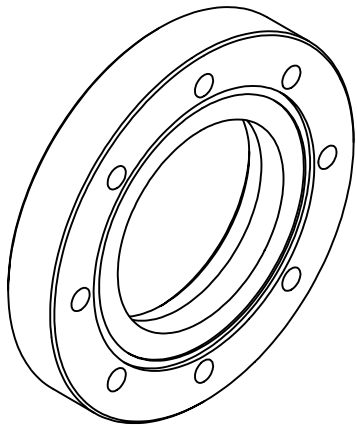
REVISIONS				
SYM.	ZONE	DESCRIPTION	DATE	APP.



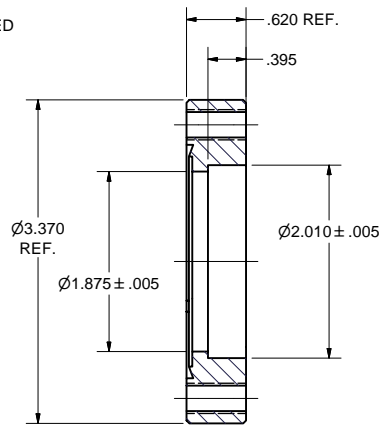
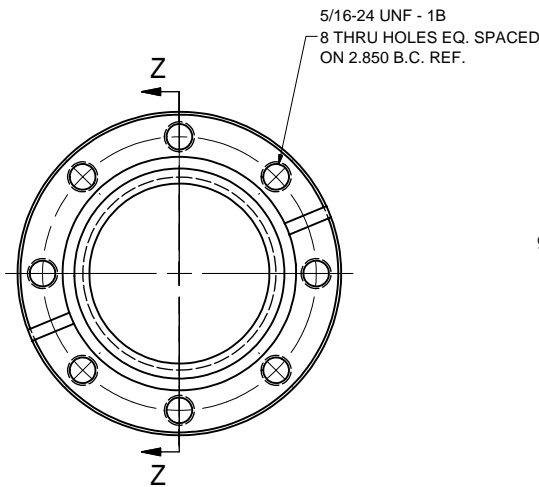
SECTION X-X



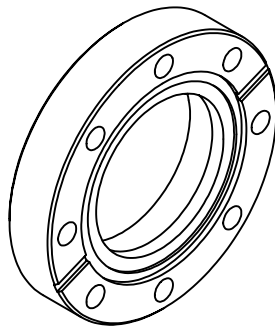
SECTION Y-Y



**4 4-1/2" CONFLAT FLANGE**  
FILE NAME: 7102-020  
SHEET NO.: 10  
DFT. SCALE: 1:1  
MATERIAL: 304 STN. STL. PURCHASED MDC F450000T OR EQUIV.  
QTY: 2 PER ASM.  
NOTES:





SECTION Z-Z



**10 3-3/8" CONFLAT FLANGE**  
FILE NAME: 7102-020  
SHEET NO.: 10  
DFT. SCALE: 1:1  
MATERIAL: 304 STN. STL. PURCHASED MDC F338200T OR EQUIV.  
QTY: 1 PER SUB-ASM.  
NOTES:

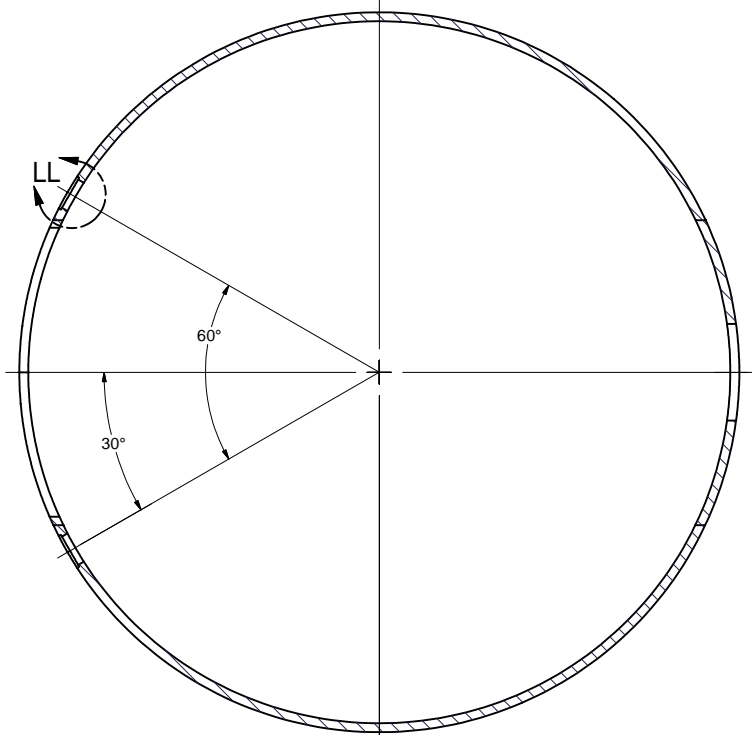
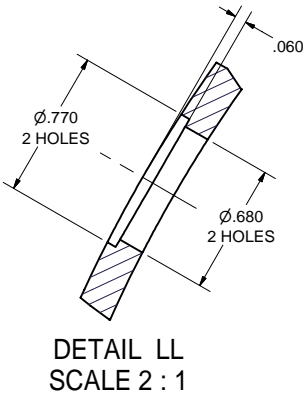
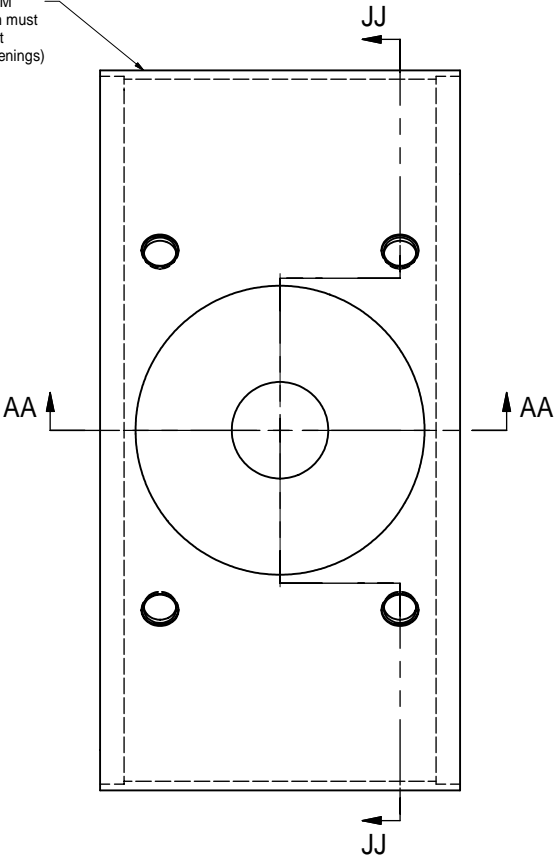
**6 6" CONFLAT FLANGE**  
FILE NAME: 7102-020  
SHEET NO.: 10  
DFT. SCALE: 1:1  
MATERIAL: 304 STN. STL. PURCHASED MDC F600400T OR EQUIV.  
QTY: 1 PER SUB-ASM.  
NOTES:

FOR MACHINING LUBRICANT USE ONLY  
ALKALINE DETERGENT LUBRICANT CIMSTAR 40  
OR EQUIVALENT APPROVED BY CORNELL LEPP

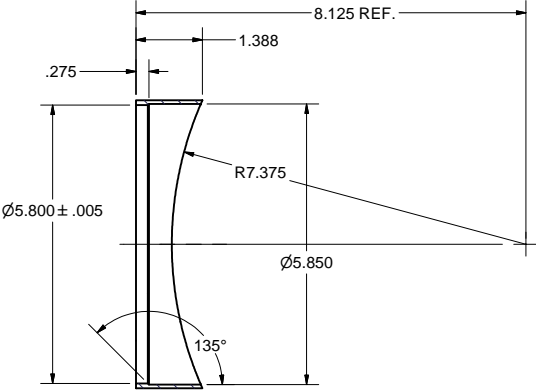
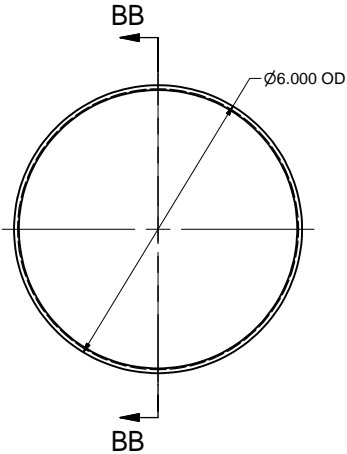
		ITEM	DWG. NO.	DESCRIPTION			G1	G2	G3	REMARKS		REV.
								QUANTITY				
D	PRINT DISTR.	PLOT DATE: 11/16/2005 CAD FILE NAME: 7102-020.idw										
7102-020 SH. NO. 10 OF 13	CR-1	UNLESS OTHERWISE SPECIFIED:  DIMENSIONS ARE IN INCHES: TOLERANCES ON: .00 ± .010 .000 ± .005 FRACTIONS ± 1/64 ANGLES ± 0.5° ALL SURFACES ✓		<div><div><div>CORNELL UNIVERSITY</div><div></div><div>LABORATORY FOR ELEMENTARY PARTICLE PHYSICS</div></div><div>CORNELL UNIVERSITY Floyd R. Newman Laboratory Ithaca, NY 14853</div></div>								
		INPUT COUPLER TEST CRYOSTAT COUPLING CAVITY W/ N2 VESSEL ,FLANGE DETAILS										
		REV.	CHECKED BY: SAB APPROVED BY: SAB	DRAWN BY VGV	DRAWN FOR SAB	DATE 4/8/2005	SCALE 1:1	D	7102-020 SH. NO. 10 OF 13	REV.		

REVISIONS				
SYM.	ZONE	DESCRIPTION	DATE	APP.
A	B6	Added material note for part #7. Removed rolled/welded note for part #7.	11/8/05	TIO
B	F7	PART #7: ADDED (2) DIA.680 HOLES W/ DIA.770 CBORE JGL	11/16/05	VGW

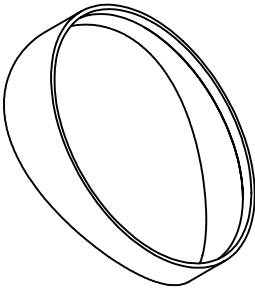
WELD SEAM  
(Weld seam must  
not intersect  
any port openings)



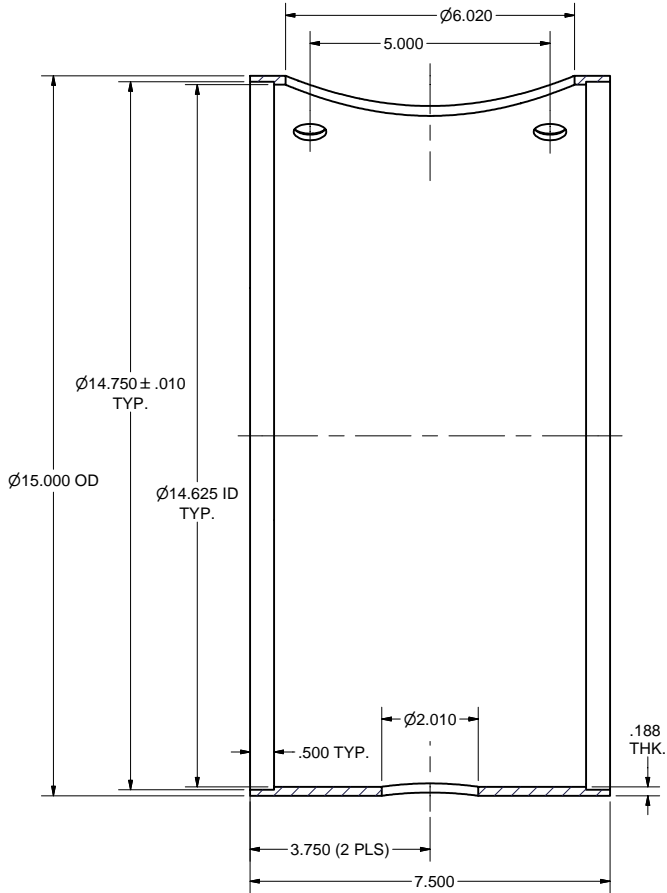
SECTION JJ-JJ



SECTION BB-BB



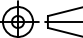

8 BOTTOM TUBE FOR NITROGEN VESSEL  
FILE NAME: 7102-020  
SHEET NO.: 11  
DFT. SCALE: 1:2  
MATERIAL: 304 STN. STL  
QTY: 1 PER SUB-ASM.  
NOTES:



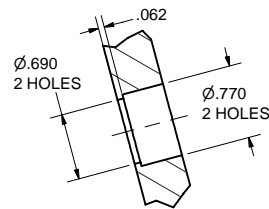
SECTION AA-AA

7 OUTER TUBE FOR NITROGEN VESSEL  
FILE NAME: 7102-020  
SHEET NO.: 11  
DFT. SCALE: 1:2  
MATERIAL: 304 STN. STL - PROVIDED BY CU-LEPP  
QTY: 1 PER SUB-ASM.  
NOTES:

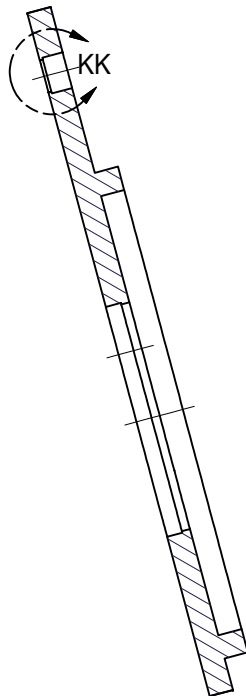
FOR MACHINING LUBRICANT USE ONLY  
ALKALINE DETERGENT LUBRICANT CIMSTAR 40  
OR EQUIVALENT APPROVED BY CORNELL LEPP

		ITEM	DWG. NO.	DESCRIPTION			G1	G2	G3	REMARKS		REV.	
		QUANTITY											
D		PRINT DISTR.											
		PLOT DATE: 11/16/2005 CAD FILE NAME: 7102-020.idw											
7102-020 SH. NO. 11 OF 13		CR-1	UNLESS OTHERWISE SPECIFIED:  DIMENSIONS ARE IN INCHES: TOLERANCES ON: .00 ± .010 .000 ± .005 FRACTIONS ± 1/64 ANGLES ± 0.5° ALL SURFACES ✓			 CORNELL UNIVERSITY Floyd R. Newman Laboratory Ithaca, NY 14853  LABORATORY FOR ELEMENTARY-PARTICLE PHYSICS							
		INPUT COUPLER TEST CRYOSTAT COUPLING CAVITY W/ N2 VESSEL , PART DETAILS											
B		REV.	CHECKED BY: SAB	DRAWN BY VGV		DRAWN FOR SAB		DATE 4/8/2005		SCALE 1:2	D	7102-020 SH. NO. 11 OF 13	REV. B
			APPROVED BY: SAB										

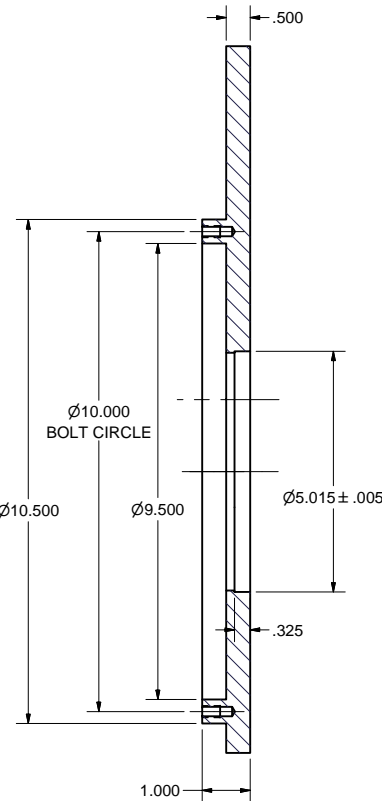
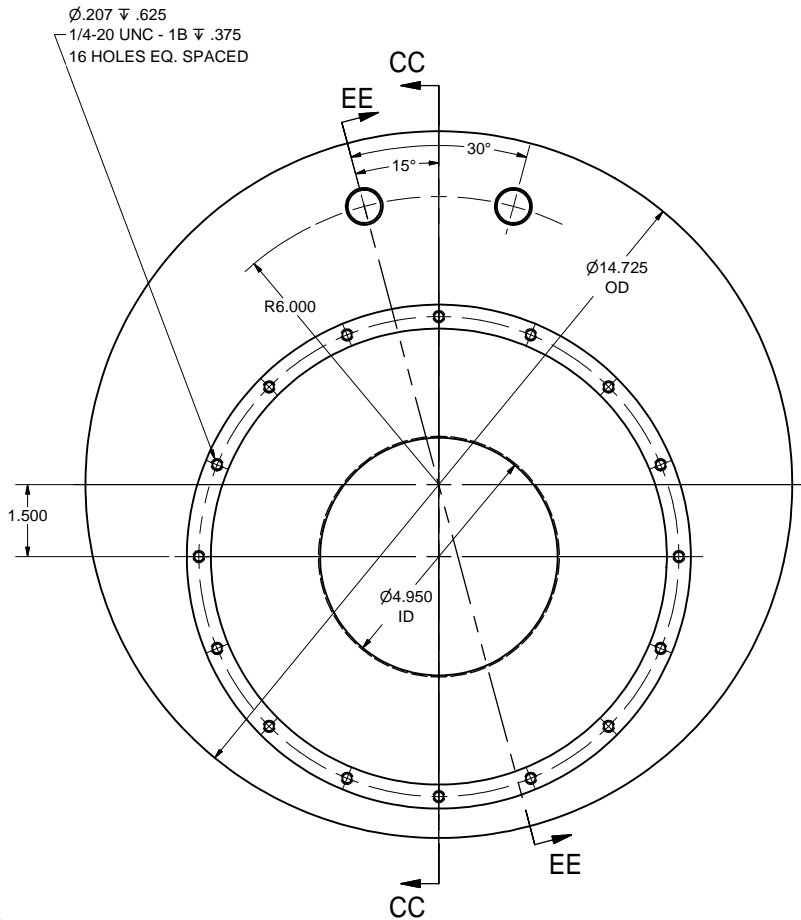
REVISIONS				
SYM.	ZONE	DESCRIPTION	DATE	APP.
A	F9	RENUMBERED PART #27-WAS PART #5 & ADDED (2) Dia.690 HOLES w/ Dia.770 C bore. ADDED SHT. #13 JGL	11/16/05	VG



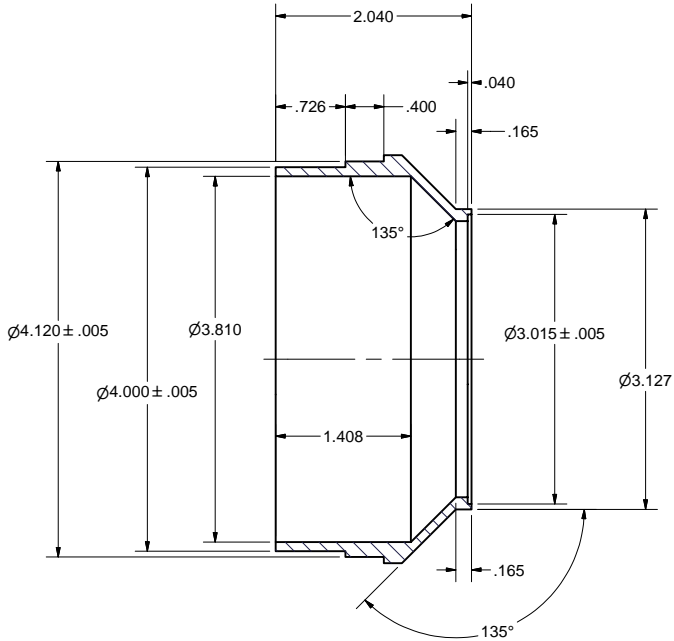
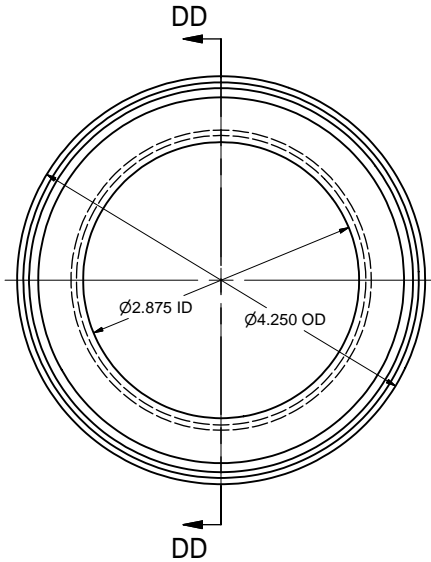
DETAIL KK  
SCALE 1 : 1



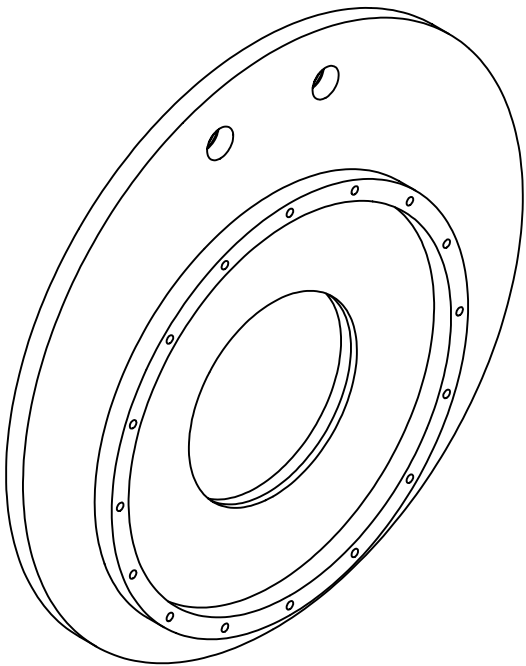
SECTION EE-EE



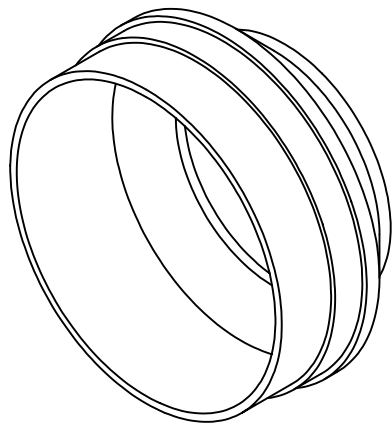
SECTION CC-CC



SECTION DD-DD




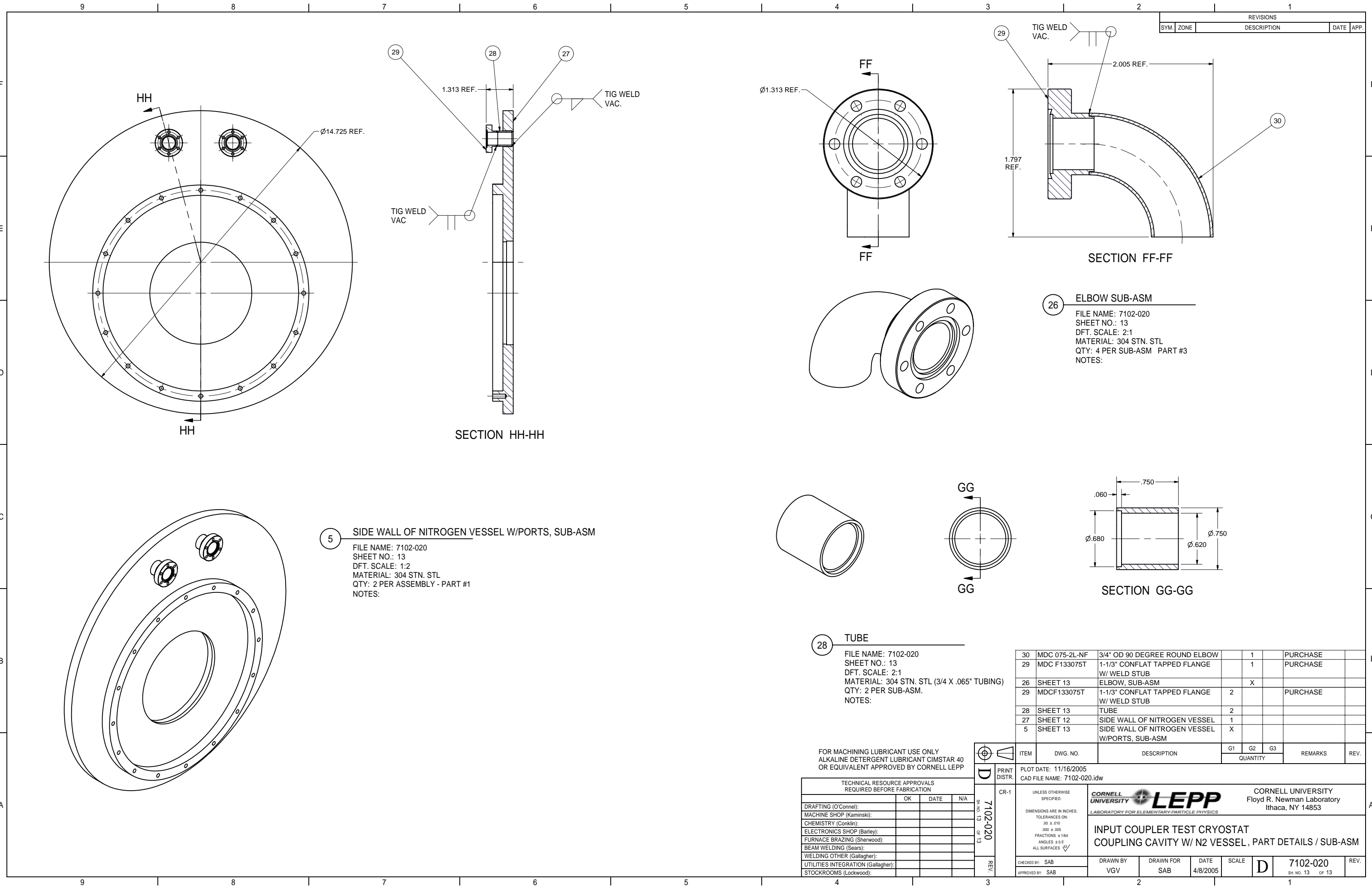
27 SIDE WALL OF NITROGEN VESSEL  
FILE NAME: 7102-020  
SHEET NO.: 12  
DFT. SCALE: 1:2  
MATERIAL: 304 STN. STL  
QTY: 1 PER SUB-ASM.  
NOTES:



13 PUMP TUBE  
FILE NAME: 7102-020  
SHEET NO.: 12  
DFT. SCALE: 1:1  
MATERIAL: 304 STN. STL  
QTY: 1 PER SUB-ASM.  
NOTES:

FOR MACHINING LUBRICANT USE ONLY  
ALKALINE DETERGENT LUBRICANT CIMSTAR 40  
OR EQUIVALENT APPROVED BY CORNELL LEPP

		ITEM	DWG. NO.	DESCRIPTION			G1	G2	G3	REMARKS		REV.
								QUANTITY				
D	PRINT DISTR.	PLOT DATE: 11/16/2005 CAD FILE NAME: 7102-020.idw										
7102-020 SH. NO. 12 OF 13	CR-1	UNLESS OTHERWISE SPECIFIED:  DIMENSIONS ARE IN INCHES: TOLERANCES ON: .00 ± .010 .000 ± .005 FRACTIONS ± 1/64 ANGLES ± 0.5° ALL SURFACES		<div>CORNELL UNIVERSITY  CORNELL UNIVERSITY Floyd R. Newman Laboratory Ithaca, NY 14853</div> <div>LABORATORY FOR ELEMENTARY PARTICLE PHYSICS</div> <div>INPUT COUPLER TEST CRYOSTAT COUPLING CAVITY W/ N2 VESSEL ,PART DETAILS</div>								
		CHECKED BY: SAB APPROVED BY: SAB		DRAWN BY VGV		DRAWN FOR SAB		DATE 4/8/2005		SCALE D		7102-020 SH. NO. 12 OF 13



5 SIDE WALL OF NITROGEN VESSEL W/PORTS, SUB-ASM  
FILE NAME: 7102-020  
SHEET NO.: 13  
DFT. SCALE: 1:2  
MATERIAL: 304 STN. STL  
QTY: 2 PER ASSEMBLY - PART #1  
NOTES:

28 TUBE  
FILE NAME: 7102-020  
SHEET NO.: 13  
DFT. SCALE: 2:1  
MATERIAL: 304 STN. STL (3/4 X .065" TUBING)  
QTY: 2 PER SUB-ASM.  
NOTES:

26 ELBOW SUB-ASM  
FILE NAME: 7102-020  
SHEET NO.: 13  
DFT. SCALE: 2:1  
MATERIAL: 304 STN. STL  
QTY: 4 PER SUB-ASM PART #3  
NOTES:

FOR MACHINING LUBRICANT USE ONLY  
ALKALINE DETERGENT LUBRICANT CIMSTAR 40  
OR EQUIVALENT APPROVED BY CORNELL LEPP

TECHNICAL RESOURCE APPROVALS REQUIRED BEFORE FABRICATION			
	OK	DATE	N/A
DRAFTING (O'Connell):			
MACHINE SHOP (Kaminski):			
CHEMISTRY (Conklin):			
ELECTRONICS SHOP (Barley):			
FURNACE BRAZING (Sherwood):			
BEAM WELDING (Sears):			
WELDING OTHER (Gallagher):			
UTILITIES INTEGRATION (Gallagher):			
STOCKROOMS (Lockwood):			

ITEM	DWG. NO.	DESCRIPTION	G1	G2	G3	REMARKS	REV.
30	MDC 075-2L-NF	3/4" OD 90 DEGREE ROUND ELBOW		1		PURCHASE	
29	MDC F133075T	1-1/3" CONFLAT TAPPED FLANGE W/ WELD STUB		1		PURCHASE	
26	SHEET 13	ELBOW, SUB-ASM		X			
29	MDCF133075T	1-1/3" CONFLAT TAPPED FLANGE W/ WELD STUB	2			PURCHASE	
28	SHEET 13	TUBE		2			
27	SHEET 12	SIDE WALL OF NITROGEN VESSEL	1				
5	SHEET 13	SIDE WALL OF NITROGEN VESSEL W/PORTS, SUB-ASM	X				
PLOT DATE: 11/16/2005 CAD FILE NAME: 7102-020.idw							
UNLESS OTHERWISE SPECIFIED: DIMENSIONS ARE IN INCHES: TOLERANCES ON: .00 ± .010 .000 ± .005 FRACTIONS ± 1/64 ANGLES ± 0.5° ALL SURFACES							
DRAWN BY VG		DRAWN FOR SAB		DATE 4/8/2005		SCALE D	
7102-020 SH. NO. 13 OF 13		7102-020 SH. NO. 13 OF 13		7102-020 SH. NO. 13 OF 13		7102-020 SH. NO. 13 OF 13	



CORNELL UNIVERSITY  
Floyd R. Newman Laboratory  
Ithaca, NY 14853

INPUT COUPLER TEST CRYOSTAT  
COUPLING CAVITY W/ N2 VESSEL, PART DETAILS / SUB-ASM